



LOLOI





DESIGNED BY LOLOI

Le Monde is pleased to be the exclusive New Zealand supplier of the award-winning Loloi designer rugs from Dallas. Loloi believe that innovative design, an eye for detail, and a commitment to craft could produce truly distinctive rugs.

LE MONDE HOME

The Adler Collection -

Discontinued



100% WOOL, HAND WOVEN, MADE IN INDIA

The Adler Collection pushes traditional flat weaves to new heights. Its innovative high/low texture elevates the wool to form a pronounced pattern with a faintly Moroccan style look. Hand-woven of wool and cotton in India, Adler is available in a cool, on trend set of neutral colours.

107cm x 168cm

152cm x 229cm



AW -02 TURKISH COFFEE

The Alchemy Collection



POLYPROPYLENE / POLYESTER, POWERLOOMED,
MADE IN TURKEY

Power-loomed of polypropylene & polyester, the Alchemy Collection is awash with colourful details. With its high/low pile combined with a playful colour palette, Alchemy offers a high-end look at an attractive price. Plus, each piece is highly durable and never sheds.

81cm x 122cm

102cm x 170cm

81cm x 229cm

81cm x 320cm

81cm x 396cm

160cm x 229cm

201cm x 279cm

241cm x 320cm

297cm x 411cm

350cm x 457cm



ALC 04 SILVER GRAPHITE



ALC 05 DENIM IVORY



ALC 01 STONE SLATE



ALC 02 GRANITE GOLD

The Anastasia Collection



POLYPROPYLENE / POLYESTER, POWERLOOMED,
MADE IN EGYPT

Ornate traditional distressed and full of character are modernized by illuminating colourways in the Anastasia Collection from Egypt. The intricate detail, lustre of colours, and unbeatable price point establish the value of this outstanding collection.

79cm x 122cm

79cm x 244cm

79cm x 305cm

79cm x 366cm

109cm x 170cm

160cm x 234cm

201cm x 279cm

239cm x 330cm

289cm x 396cm

365cm x 457cm

396cm x 549cm

160cm Round

239cm Round

289cm Round



AF 04 ANT.IVORY RUST



AF 06 INK IVORY



AF 13 MIST BLUE





AF 14 GREY SAGE

The Barkley Collection



WOOL/VISCOSE, HAND LOOMED, MADE IN INDIA

Breathe order, balance and calm into any setting with the hand-loomed Barkley Collection from India. These linear, tonal designs in wool and shimmery viscose are at once casual, chic and ultra-sophisticated, with intricately shaded neutrals like charcoal, ivory, mocha and silver. Whether you are winding down from a hard-earned day or gently easing into a new one, the soothing designs in the Barkley Collection will provide the perfect sense of harmony and peace just where you need it most.

107cm x 168cm

152cm x 229cm

229cm x 289cm

282cm x 396cm

366cm x 457cm



BK 01 SILVER



BK 01 CHARCOAL

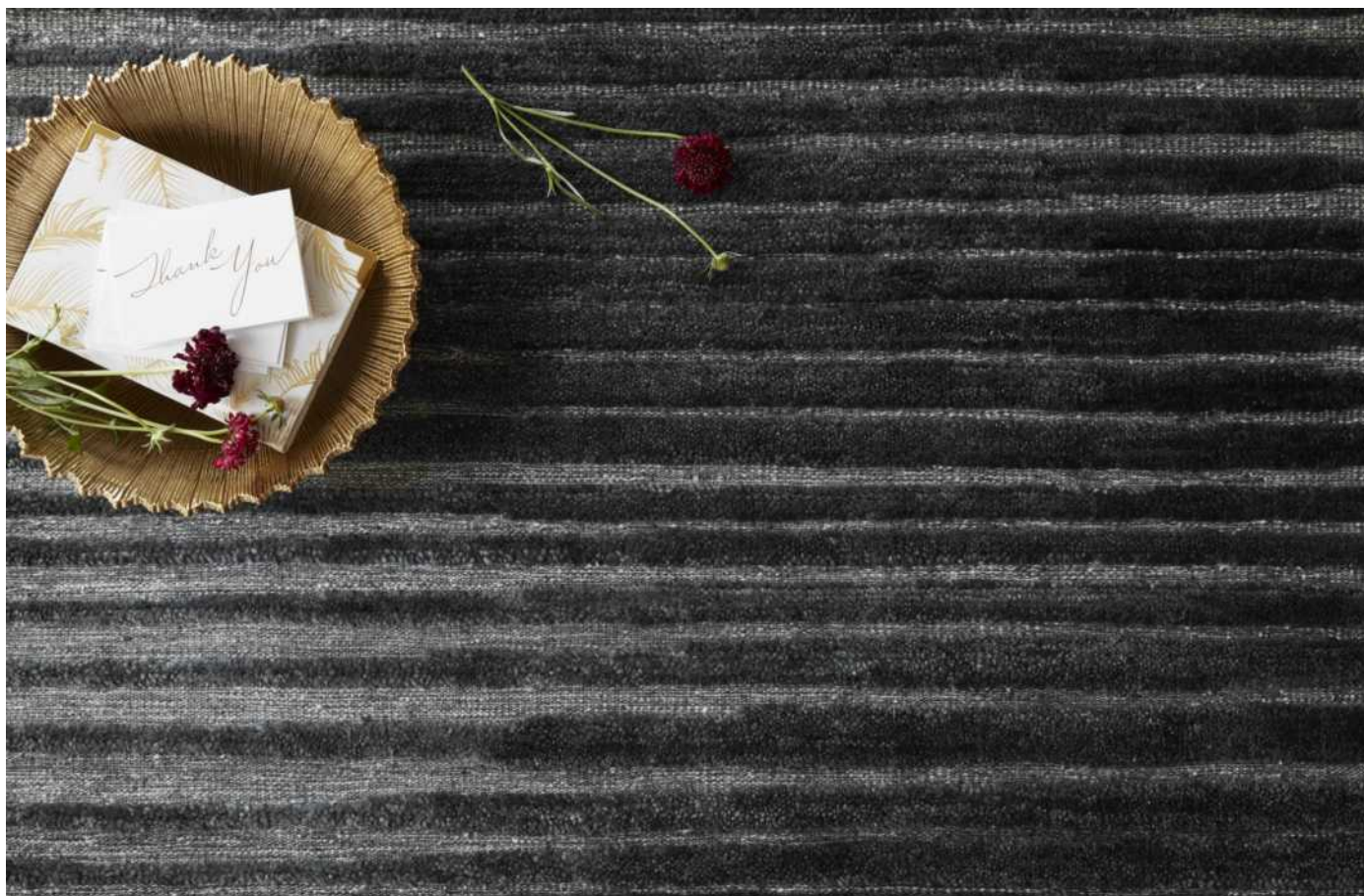


BK 01 IVORY



BK 01 MOCHA

The Cadence Collection



100% WOOL, HAND KNOTTED, MADE IN INDIA

Expertly hand-knotted in India of wool & a touch of viscose from Bamboo, the Cadence Collection touts versatile appeal with unparalleled depth and dimension. What's more, each piece is exceptionally durable - perfect for your busiest rooms.

61cm x 91cm

122cm x 183cm

183cm x 274cm

244cm x 305cm

274cm x 366cm

305cm x 427cm

366cm x 457cm

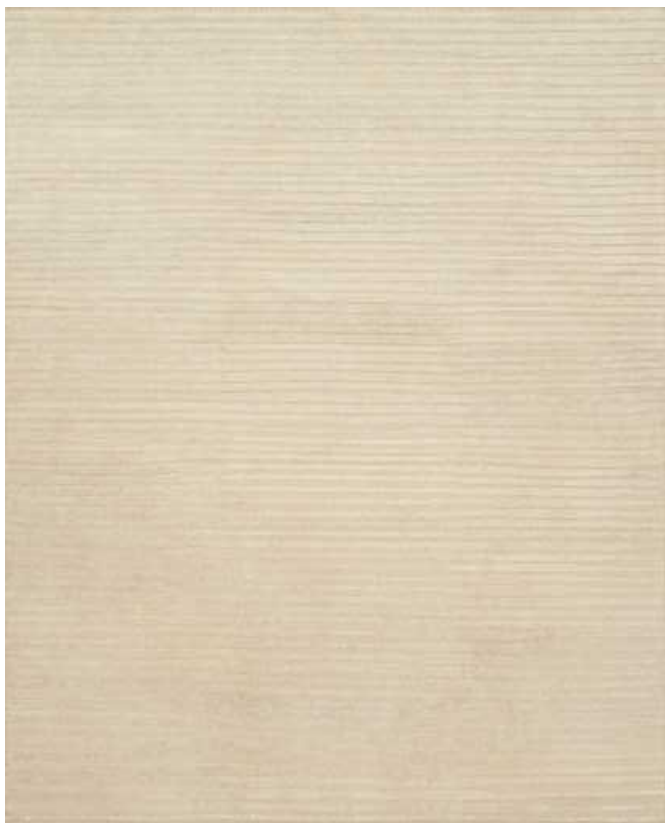


The Cadence Collection

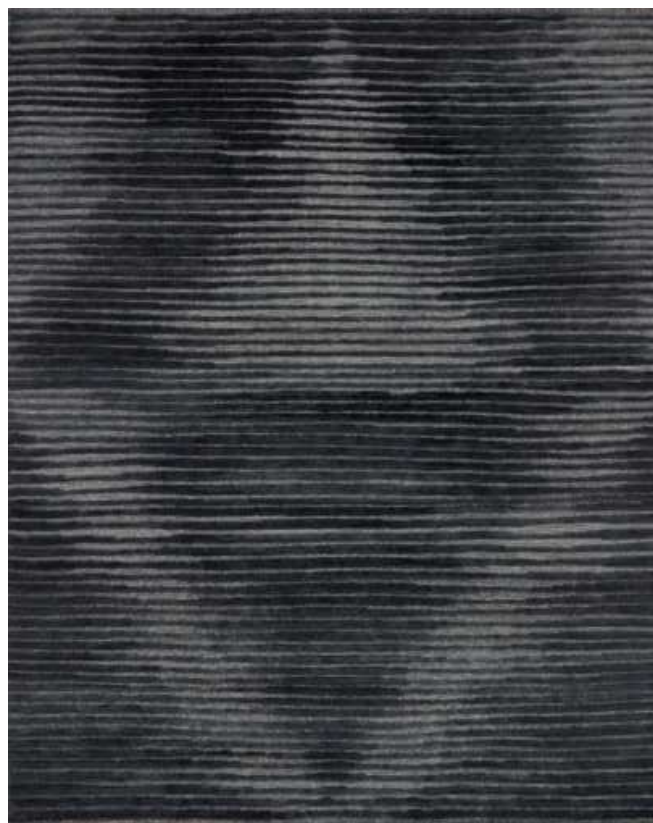
SURFACE APPEAL

Take - notice texture that's
fitting for any room.





NZ 01 BEIGE



NZ 01 CHARCOAL



NZ 01 GREY



NZ 01 NAVY

The Cascade Collection



VISCOSE / POLYESTER, POWER LOOMED,
MADE IN TURKEY

Fluid in design and awash with colour, the Cascade Collection features textural strokes reminiscent of natural topographics. Power-loomed in Turkey, Cascade artfully pairs viscose and polyester fibres for a high-end appearance, minus the high-end price.

79cm x 122cm
109cm x 170cm

79cm x 244cm
160cm x 234cm
289cm x 396cm

79cm x 305cm
201cm x 279cm
366cm x 457cm

79cm x 366cm
239cm x 330cm



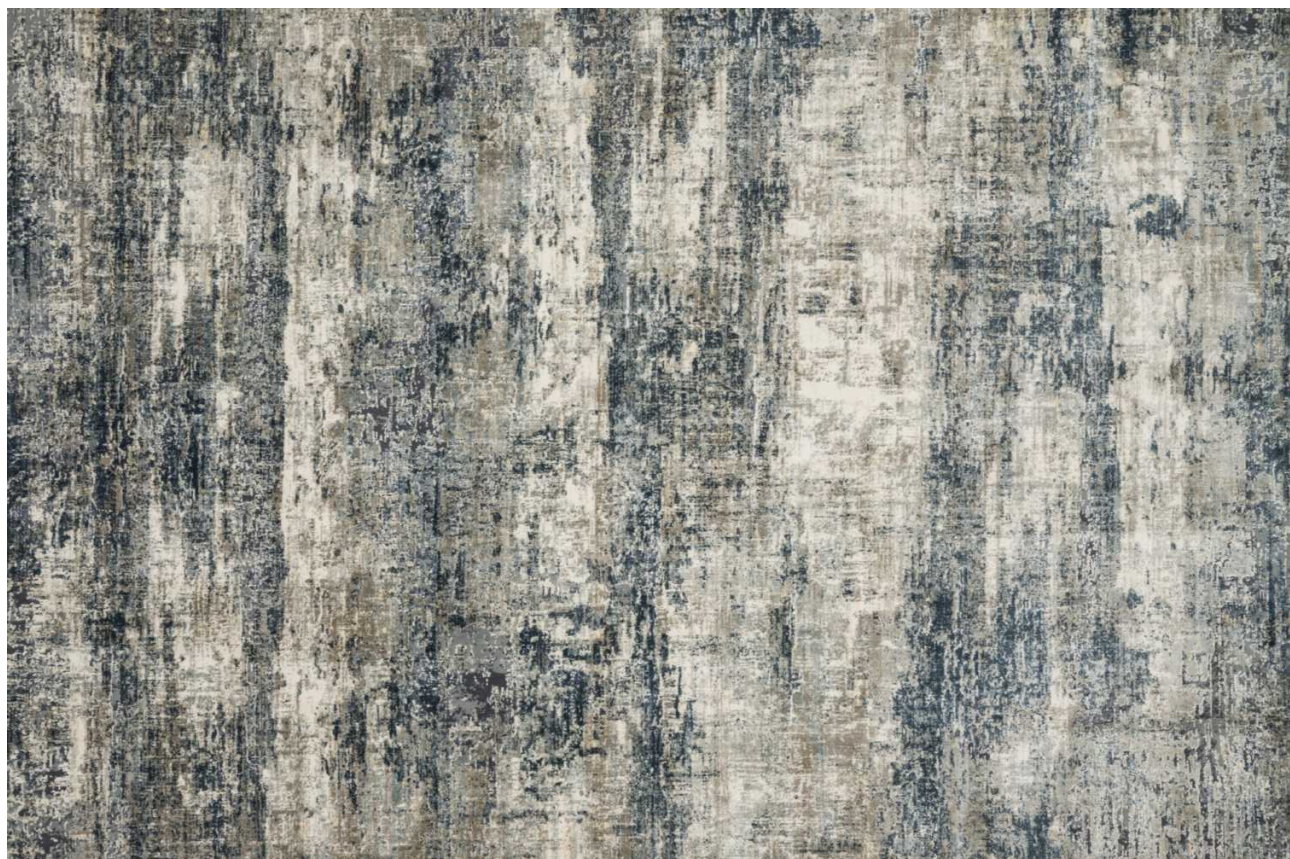
CAS 01 TAUPE BLUE



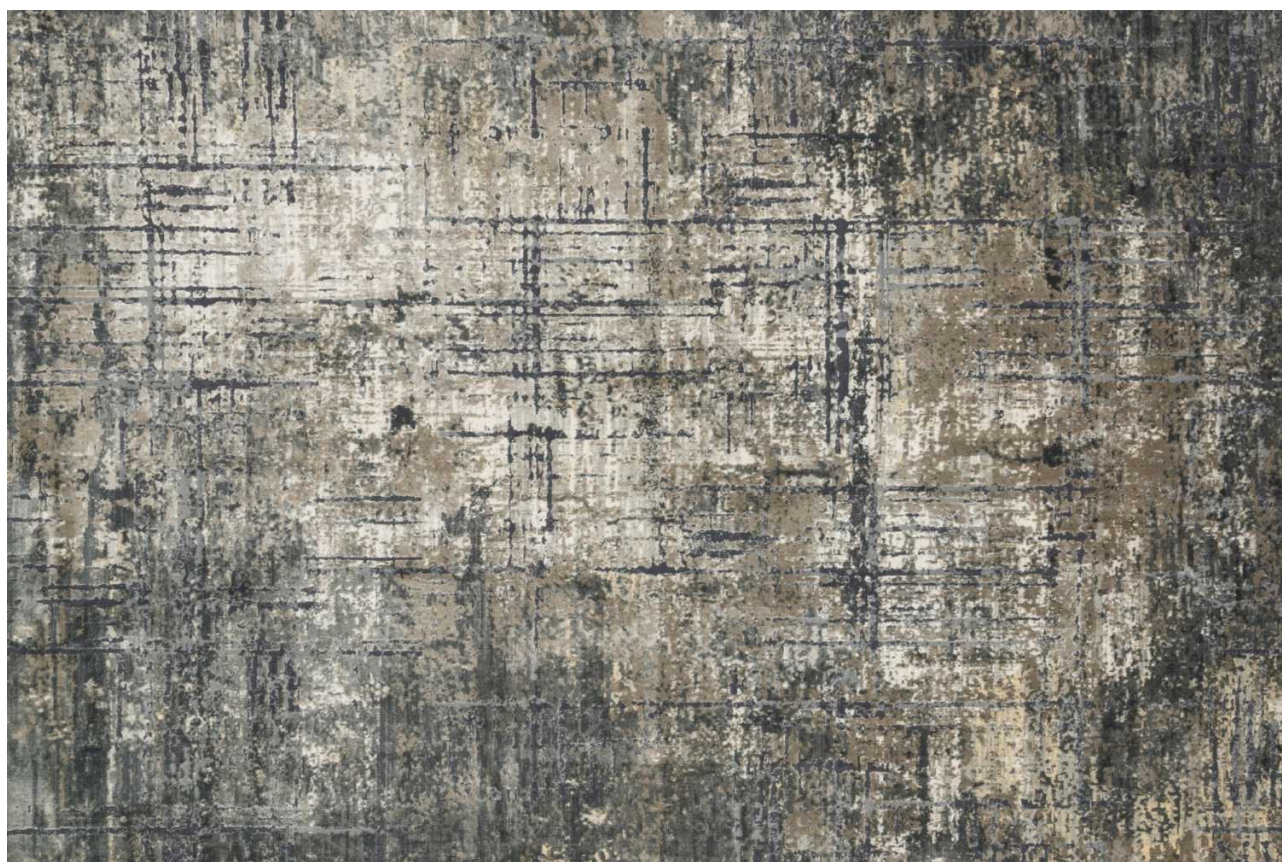
CAS 03 IVORY CHARCOAL



CAS 04 IVORY NATURAL



CAS 05 OCEAN GREY



CAS -02 MARINE GREY

The Claire Collection



POWER LOOMED / 100% POLYESTER
MADE IN TURKEY

Power-loomed of polyester pile in Turkey, the Claire Collection displays a beautiful color palette and a mix of abstract and traditional-inspired motifs. Add this timeless beauty to your decor, with a rich and diverse color palette to fit any design style.

107cm x 155cm

79cm x 289cm

289cm x 396cm

239cm x 310cm

79cm x 244cm

160cm x 236cm

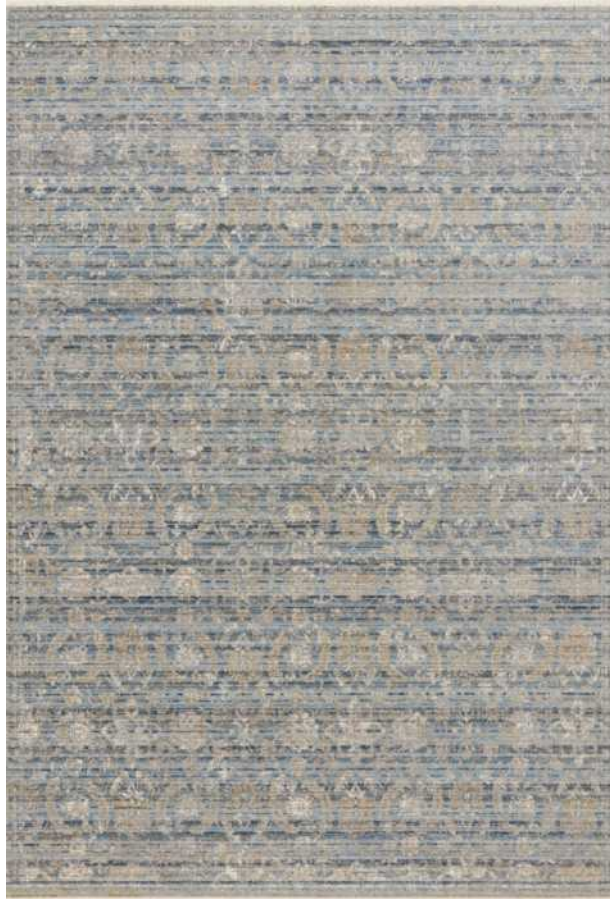
350cm x 475cm



CLE-01 RED/IVORY



CLE-02 IVORY/OCEAN



CLE-03 OCEAN/GOLD



CLE-04 BLUE/MULTI



THE CLAIRE COLLECTION



CLE-05 IVORY/MULTI



CLE-06 BLUE/SUNSET

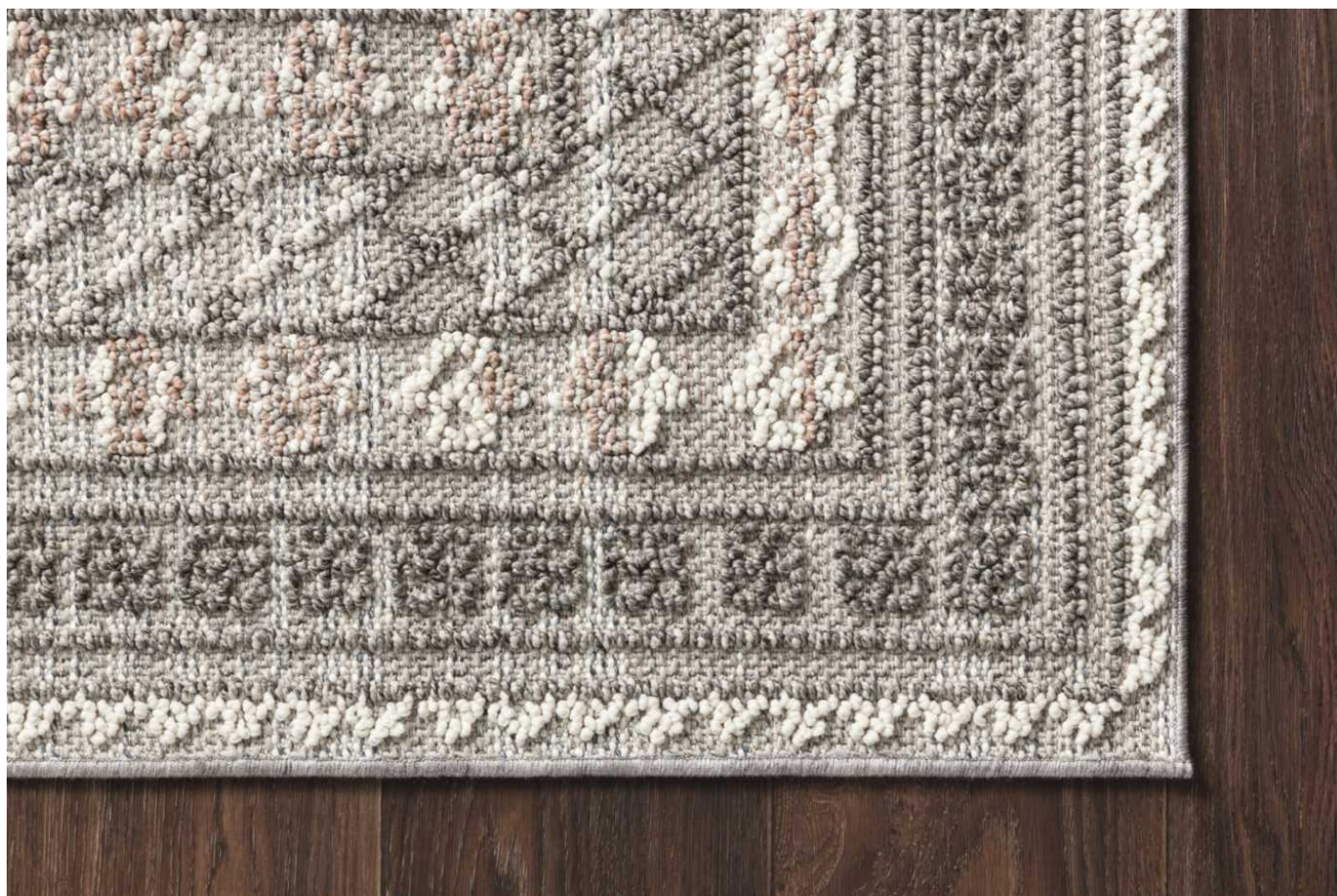


CLE-07 GREY/MULTI



CLE-08 NEAUTRAL/SEA

The Cole Collection



COR 03 GREY MULTI

100% POLYPROPYLENE PILE, POWER LOOMED,
MADE IN TURKEY

The Cole Collection is a calming collection of contemporary neutral tones and contrasting pile height for added interest. Power-loomed in Turkey of polypropylene pile, these designs are casual and refined with beautiful textural detail.

63cm x 102cm

66cm x 175cm

79cm x 236cm

122cm x 175cm

79cm x 305cm

79cm x 366cm

152cm x 229cm

201cm x 284cm

239cm x 307cm

289cm x 386cm



COR 02 DENIM GREY



COR 02 BLUSH IVORY



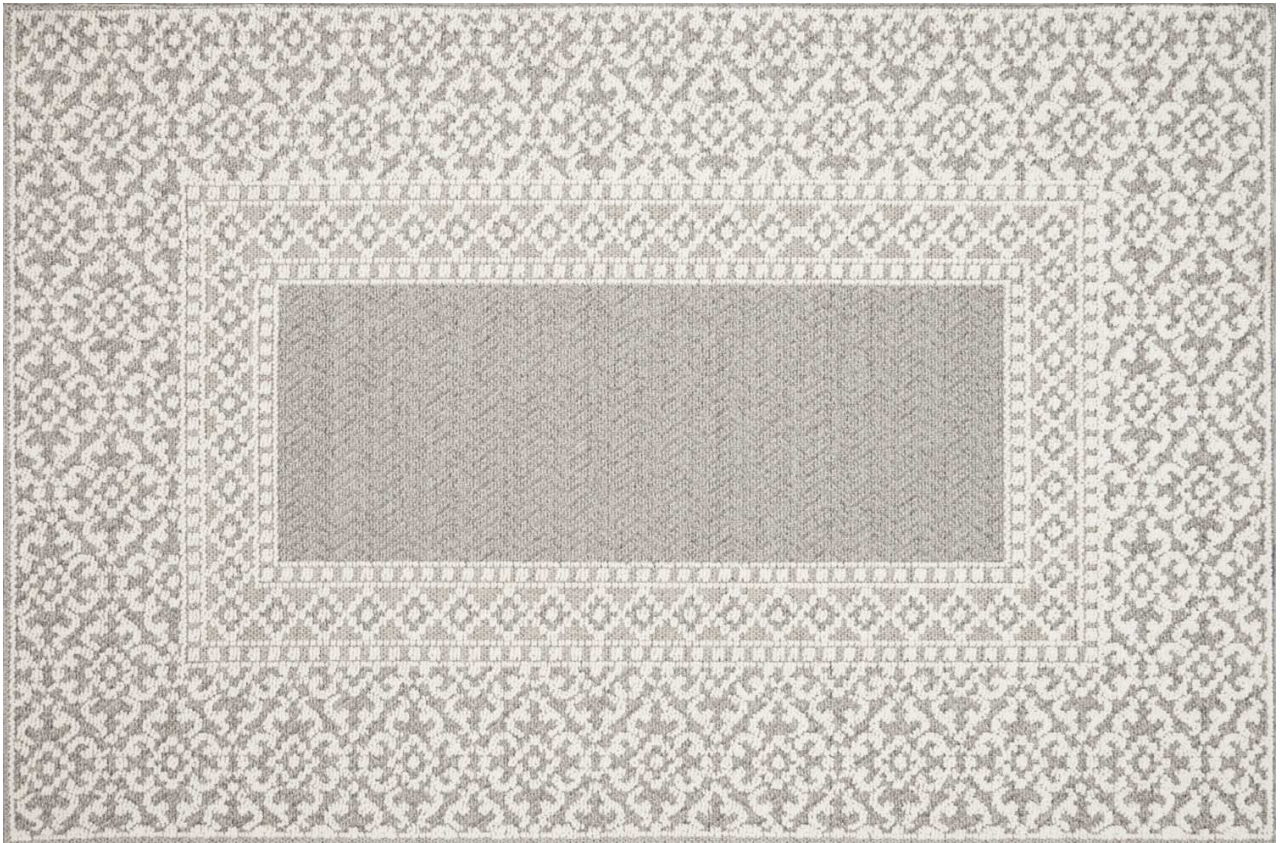
COR 02 GREY BONE



COL 03 GREY MULTI



COL 01 IVORY MULTI



COL 05 GREY IVORY



COL 04 SILVER IVORY

The Cornelia Collection



COR-05 SEAFOAM GREEN BRICK

JUTE/POLYESTER, HAND WOVEN, MADE IN INDIA

Soft, durable and textured, the Cornelia Collection features a ribbed texture and generous fringe that lends a casual, yet up-to-date aesthetic. Cornelia is printed in India of jute and chenille, ensuring a comfortable feel underfoot. Designed by Justine Blakeney for Loloi.

68cm x 114cm

107cm x 168cm

152cm x 229cm

236cm x 297cm



COR 02 INDIGO NATURAL



COR 06 DENIM MULTI



COR -04 MULTI MULTI



COR -07 OCEAN SUNSET

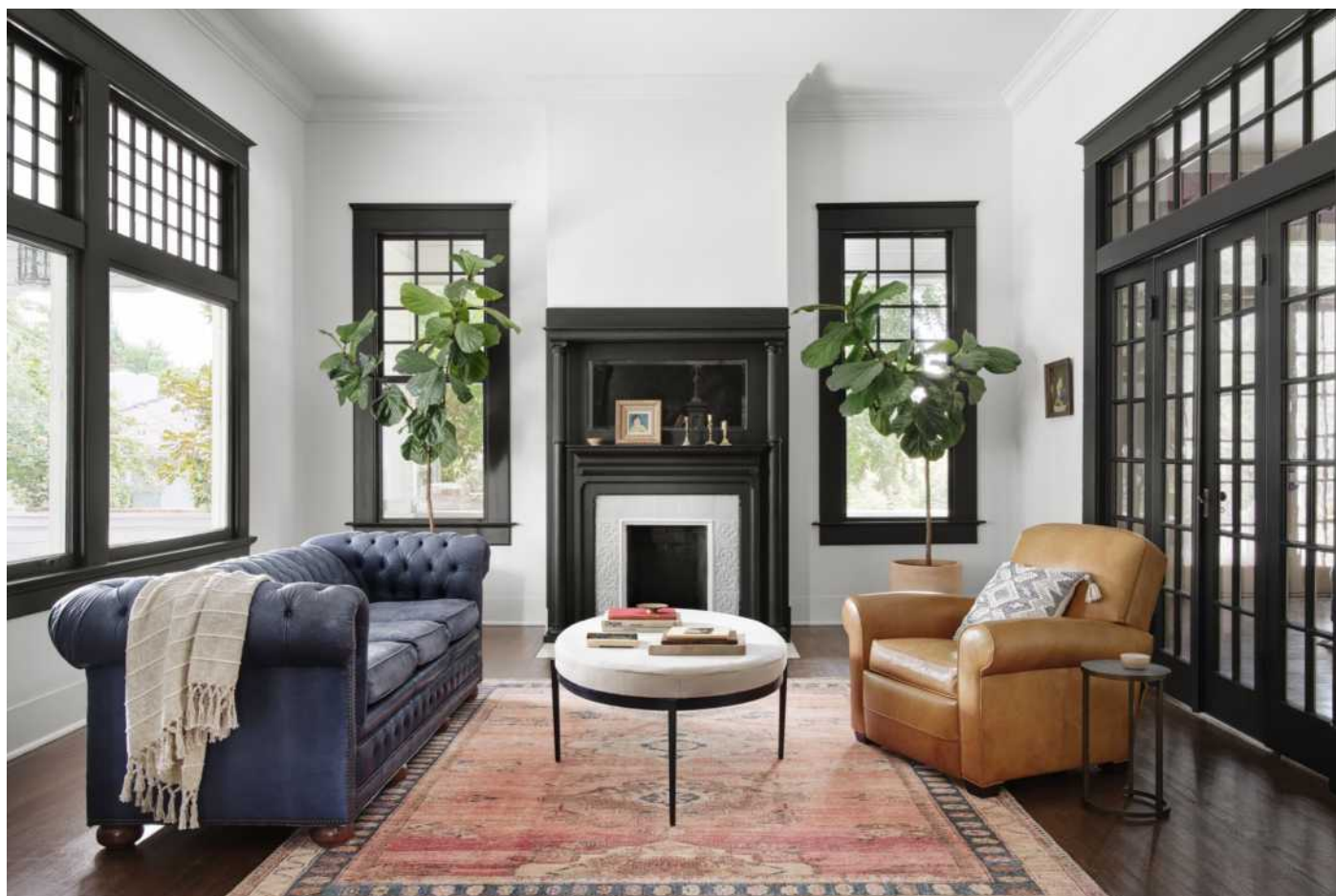


COR -03 GOLD FIESTA



COR -01 NATURAL TEAL

The Deven Collection



100% POLYESTER FACE, POWER LOOMED,
MADE IN TURKEY

The Deven Collection from Magnolia Home by Joanna Gaines is power loomed of polyester, cotton, jute and viscose. Featuring warm colors and timeless designs, Deven humbly captures the soul of a one-of-a-kind rug through the advanced printing technology. Crafted by Loloi.

68cm x 114cm

76cm x 229cm

107cm x 168cm

152cm x 229cm

229cm x 289cm

DEV 02 MH FROST



DEV 01 MH
SUNSET INDIGO



DEV 02 MH
NEUTRAL



DEV 03 MH OCHRE
NEUTRAL



DEV 04 MH
PERSIMMON
INDIGO





DEV 06 MH CHARCHOAL BLUSH



DEV 07 MH BORDEAUX MULTI



DEV 06 MH CREAM LATTE



DEV 08 MH SPICE SKY

The Discover Collection -

Discontinued



100% POLYESTER, POWER LOOMED,
MADE IN CHINA

Prized for its ribbed texture and incredibly soft polyester microfiber, the Discover Collection from China balances contemporary design with amazing comfort. The patterns enjoy an abstract modern art feel, adorned with a colour palette of cool greys, beiges and taupe's for added versatility. Durable, colour fast & stain resistant.

107cm x 168cm

229cm x 289cm



DC 04 STONE

The Dreamscape Collection -

Discontinued



50% POLYESTER 50% POLYPROPYLENE,
POWER LOOMED, MADE IN TURKEY

Fluid in design and awash with color, the Dreamscape Collection has an unrivaled sense of movement in each piece. Power-loomed in Turkey with a blend of polypropylene and polyester, Dreamscape feels soft underfoot and has the benefit of long-lasting durability and stain-resistance, too.

152cm x 229cm

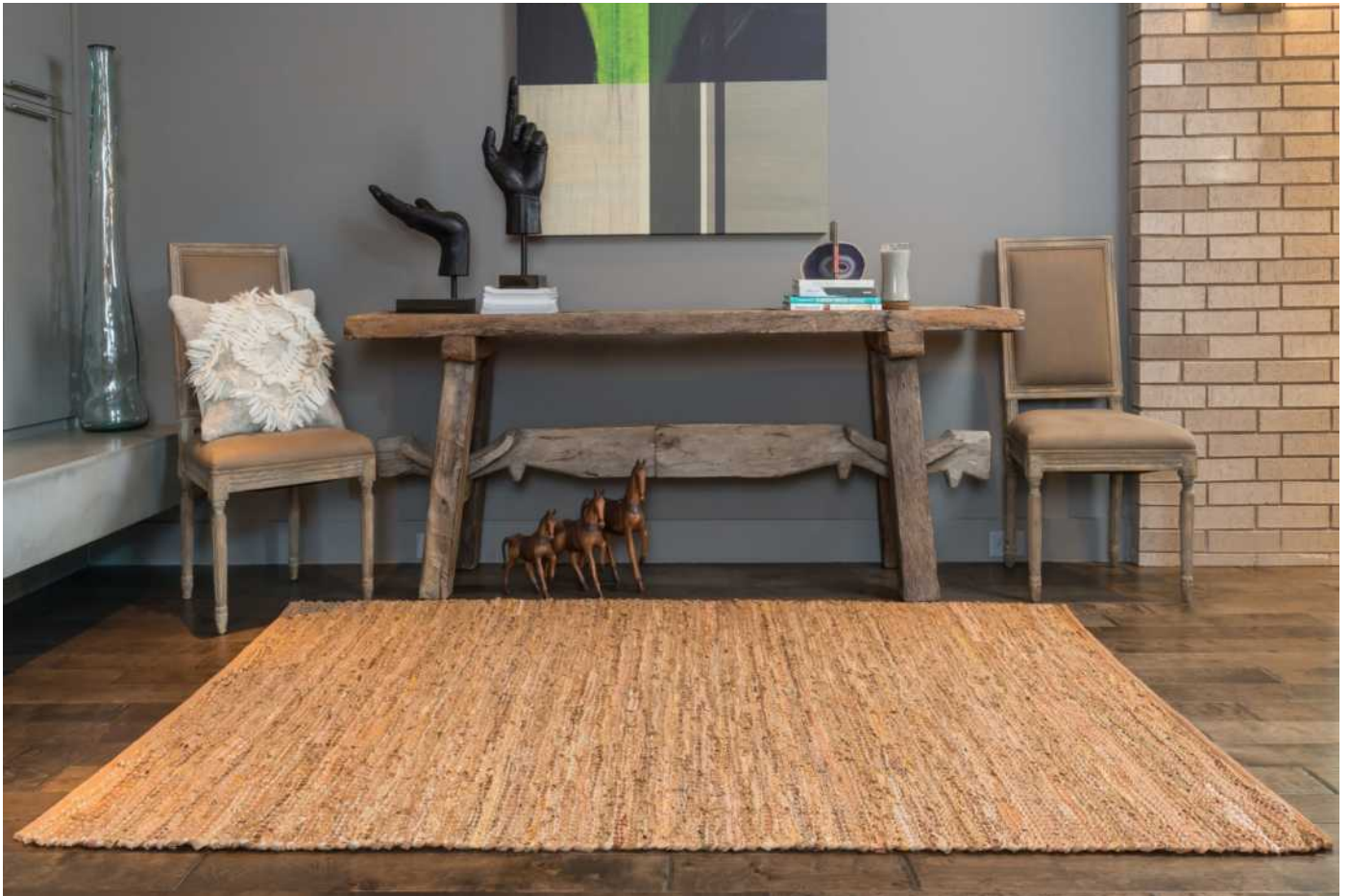


DM 08 SAGE BEIGE

The Dreamscape Collection

The Edge Collection -

Discontinued



JUTE/LEATHER, HAND WOVEN, MADE IN INDIA

Give your room an all natural feel with the Edge Collection. These earthy rugs are hand-woven in India of alternating strips of leather and jute for a unique tactile feel that your feet will love. Available in four neutral colours, ensuring a seamless addition to any décor.

107cm x 168cm

152cm x 229cm

236cm x 297cm



ED 01 GREY



ED 01 TAN



ED 01 IVORY

The Elliot Collection -

Discontinued



80 % VISCOSE, 20% WOOL, HAND LOOMED, INDIA

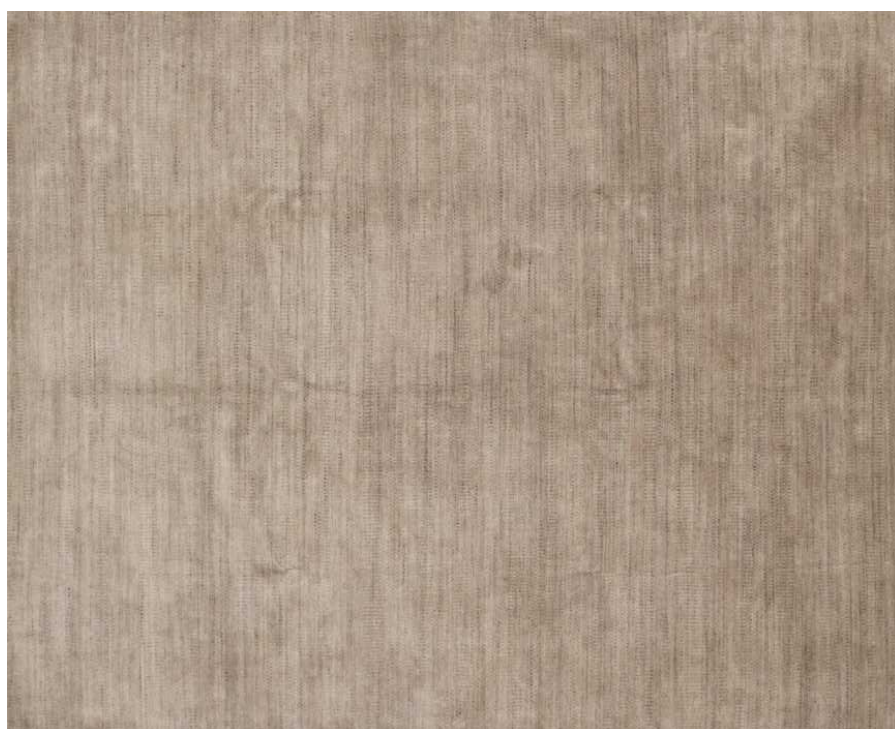
Hand-loomed of viscose from bamboo and wool in India, the plush Elliot Collection elevates the floor with an intricately scaled pattern that shimmers against refracting light.

236cm x 297cm

259cm x 350cm



EK 01 INK



EK 01 ORCHID TAUPE

The Emory Collection -

Discontinued



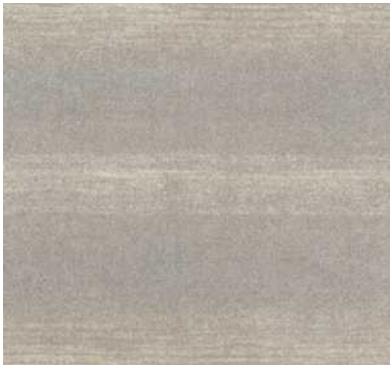
100% POLYPROPYLENE, POWERLOOMED,
MADE IN TURKEY

Power loomed in Turkey of 100% polypropylene, the Emory Collection offers a series of graphic, transitional, and traditional designs in a trending palette that's a seamless, yet striking addition for any room. Durable and dependable, Emory is a smart foundation for even the most high traffic spots.

74cm x 231cm

160cm x 231cm

231cm x 320cm



EB 03 SILVER



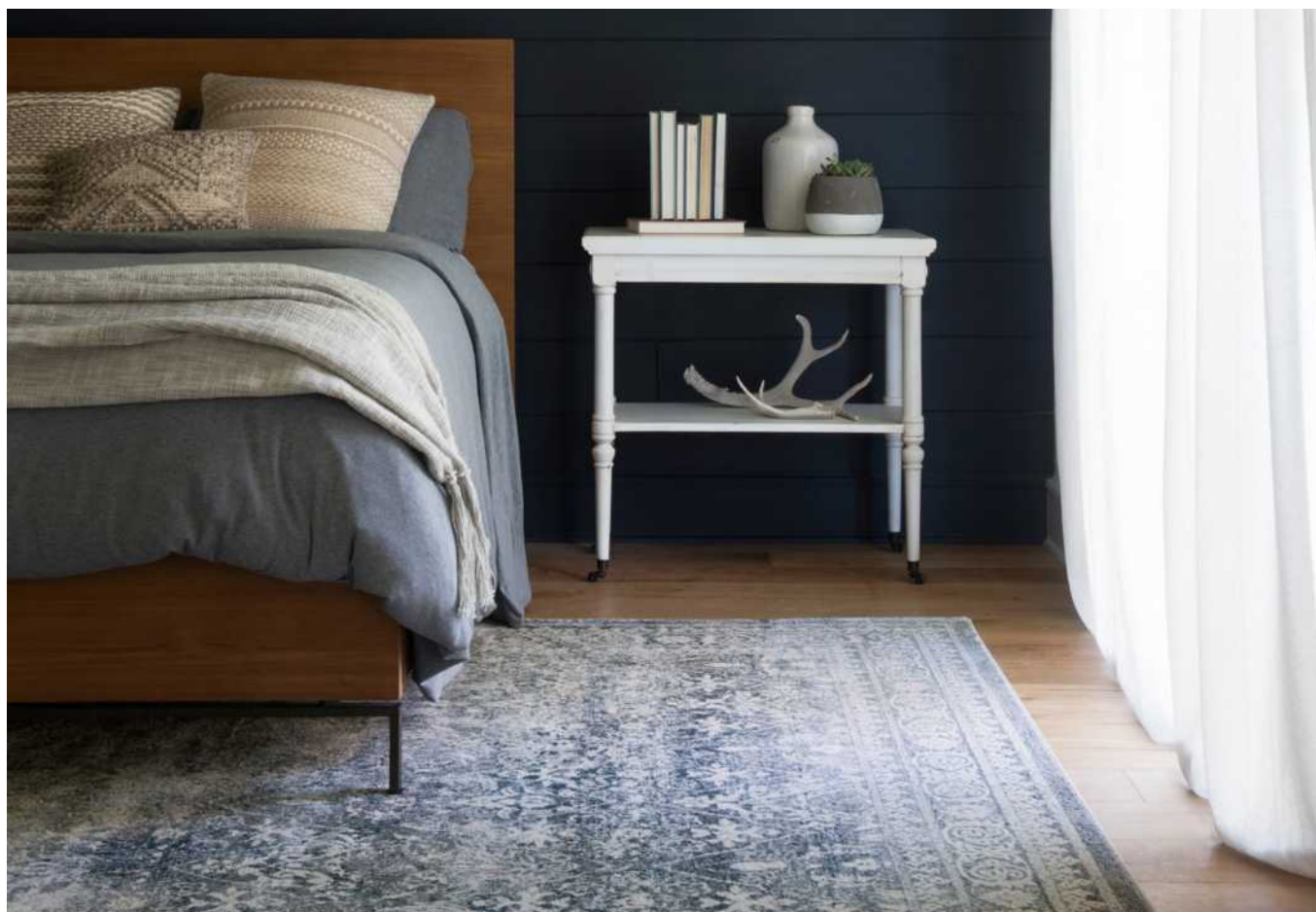
EB 04 GRANITE



EB 10 STONE GRAPHITE



The Everly Collection



POLYPROPYLENE/POLYESTER, POWER LOOMED,
MADE IN TURKEY

Cool smoky and ethereal textures in the Everly Collection for Magnolia Home by Joanna Gaines will refresh any space with elegance and grace. Power-loomed of polypropylene and polyester for strong durability. Everly is available in a wide range of sizes and shapes. Including round shapes and runners.

79cm x 122cm

79cm x 244cm

79cm x 305cm

79cm x 366cm

109cm x 170cm

160cm x 234cm

201cm x 279cm

239cm x 330cm

289cm x 396cm

366cm x 457cm

160cm Round

239cm Round



VY 01 MH INDIGO INDIGO



VY 04 MH SLATE SLATE



The Everly Collection



VY 03 MH IVORY

The Filigree Collection -

Discontinued



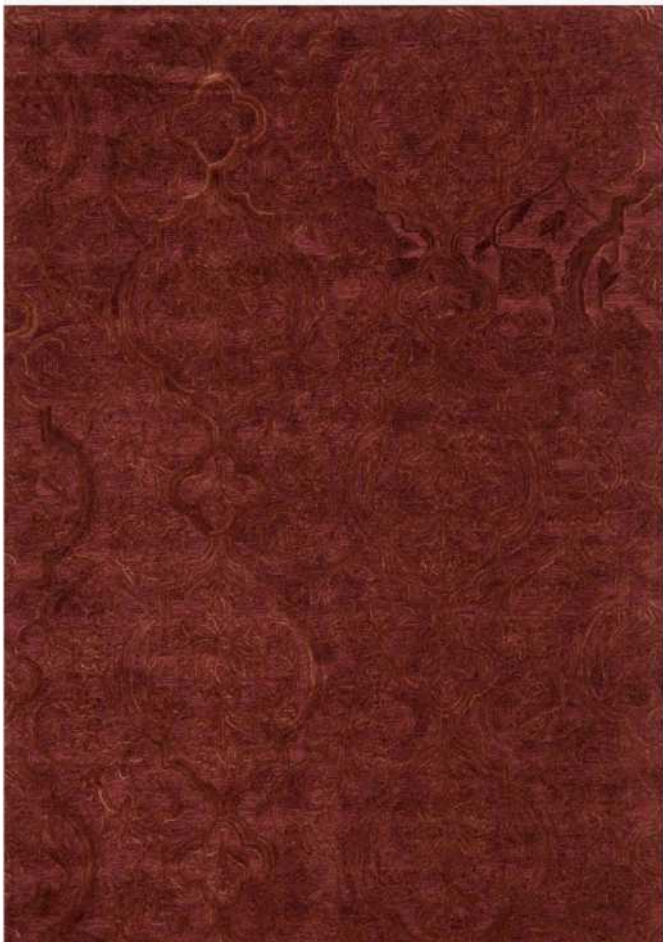
VISCOSE/WOOL, HAND TUFTED, MADE IN INDIA

Tonal space-dyed colours, muted designs, and a thoughtful cut-and-loop texture imbue our Filigree Collection with a quiet elegance. Each piece is masterfully hand-tufted in India of viscose for a silken effect and wool for durability.

107cm x 168cm

152cm x 229cm

236cm x 297cm



FI 01 RUST



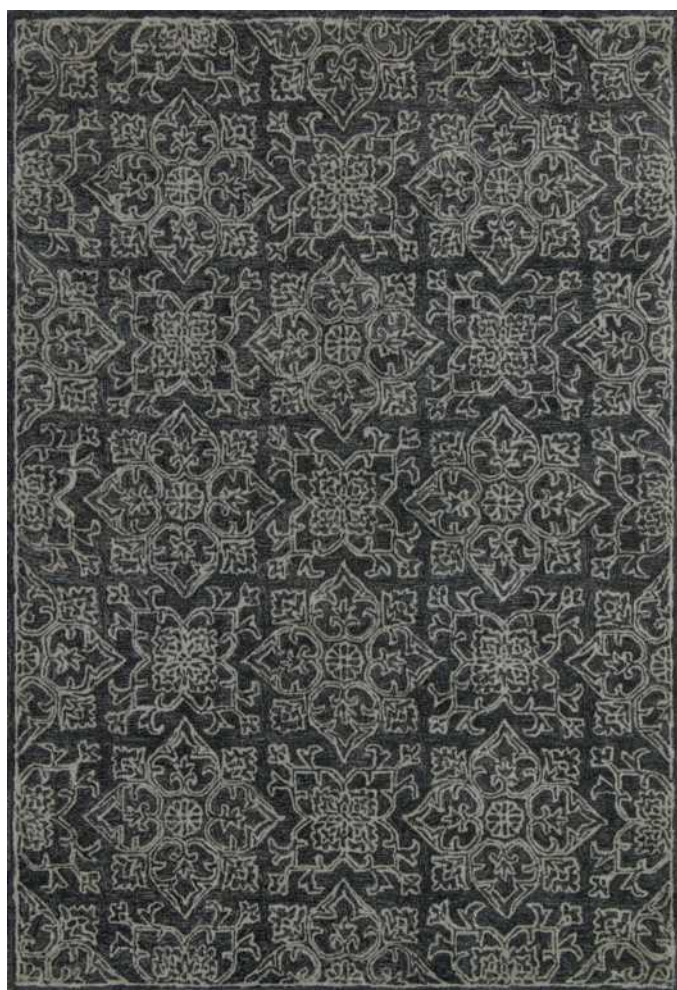
FI 02 NAVY



The Filigree Collection



FI 03 SAND



FI 04 CHARCOAL



FI 02 SILVER

The Francesca Collection -

Discontinued



FC -60 IVORY FIESTA

100% POLYESTER, HOOKED, MADE IN CHINA

If your lifestyle is fresh, spirited, and informal, the intricately hooked Francesca Collection is for you. These richly textured designs range from boldly scaled florals and architectural gate patterns to geometric chevron stripes and pretty paisleys. Crafted to reflect your personal style, each Francesca rug is made in China of 100% polyester with fibers that are stain- and moisture-resistant. That means colors will remain vibrant today and tomorrow, whether you place your rug in a sunroom, kitchen, family room or foyer.

91cm Round

107cm x 168cm

152cm x 229cm



FC 63 AQUA MULTI



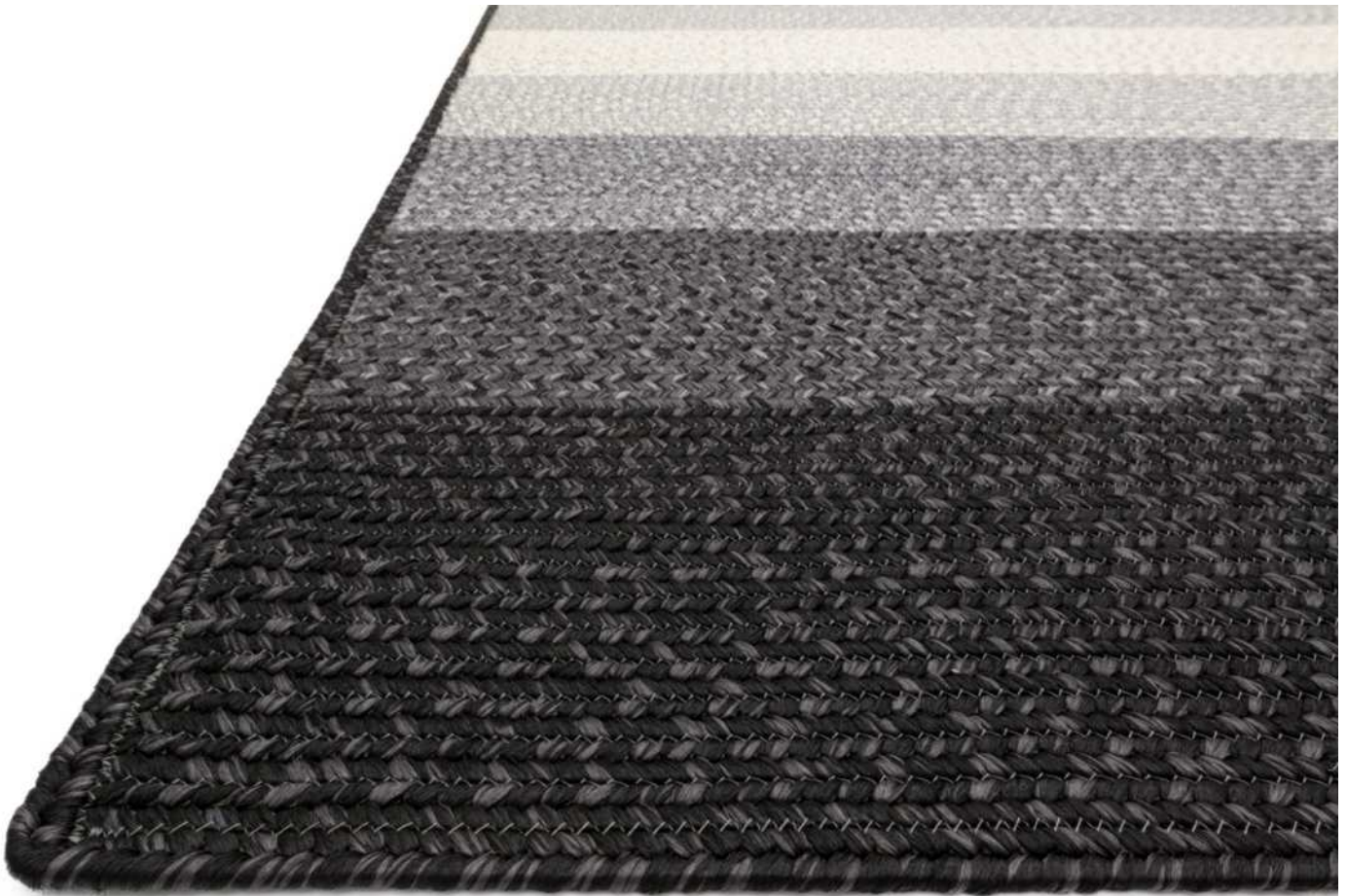
FC 61 IVORY BERRY



FC 60 NAVY FIESTA

The Garrett Collection -

Discontinued



100% POLYPROPYLENE, BRAIDED, MADE IN CHINA

A new take on a traditional braided rug, the Garrett collection is hand-braided in China of a polypropylene that is soft to the touch with a nice sheen. The range of colorways will brighten any indoor or outdoor space.

107cm x 168cm

152cm x 229cm



GA 04 BLACK IVORY

The Giana Collection



100% WOOL, HOOKED, MADE IN INDIA

Inspired by textural watercolours, the Giana Collection combines a relaxed grid with soft variations of colour for an effortless and sophisticated look. Each piece is hooked with wool by artisans in India for a beautiful textural layer to add to our home.

76cm x 229cm

107cm x 168cm

152cm x 229cm

236cm x 297cm

282cm x 396cm

366cm x 457cm



GH 01 CHARCOAL



GH 01 ANTIQUE IVORY



GH 01 BLUSH



GH 01 GRANITE



GH 01 SPA



GH 01 SMOKE



The Giana Collection

The Grand Canyon Collection



48% ACRYLIC, 32% MODACRYLIC, 20% POLYESTER,
POWER LOOMED, MADE IN CHINA

The Grand Canyon is a contemporary rug made in China from woven synthetics. The captivating look and colours are sure to bring a cabin and country living feel to a city dwelling.

117cm x 152cm

152cm x 198cm

188cm x 244cm



GC 01 CAMEL BEIGE



GC 03 IVORY CHAROCAL



GC 05 BEIGE BROWN



GC 10 IVORY



The Grand Canyon Collection



GC 11 GREY IVORY



GC 15 SILVER GREY

The Griffin Collection -

Discontinued



100% VISCOSE, POWER LOOMED, MADE IN EGYPT

A fresh take on traditional design, the Griffin Collection is a classic series that lends a refined touch to any interior space. Each piece is power loomed in Egypt of 100% viscose for a smooth, silky feel.

152cm x 198cm

229cm x 317cm

279cm x 371cm



GF 04 SEA



GF 04 MIST

The Griffin Collection

The Hadley Collection

Discontinued



100% WOOL, HAND LOOMED IN INDIA

Natural beauty is expressed in an understated fashion with the Hadley Collection, an eco-friendly collection of 100% undyed wool Loom Knotted in India. Hadley features an intriguing cut pile and loop combination which adds distinctive texture to these handsome and durable designs. Also, the muted colours fit easily with a variety of interior styles while still earning notice with raw elegance.

152 cm x 229cm



HD 04 OATMEAL

The Heidi Collection



TERRACOTTA/AQUA

POWER LOOMED OF 100% POLYESTER FACE

The Heidi Collection displays exquisite old-world medallions with a timeless and classic color palette. Power-loomed in China of 100% polyester, these printed designs provide the textured effect of high-end rugs at an affordable price.

68 x 114cm	76 x 229cm	76 x 350cm	183 x 274cm
61 x 152cm	107 x 168cm	183 x 183cm Round	229 x 229cm Round
229 x 289cm	76 x 289cm	185 x 229cm	259 x 350cm



DOVE/ SPICE



DOVE/ BLUSH



SAGE/ MULTI



DENIM / BLUSH



SPICE / AQUA



IVORY / OCEAN



SUNSET / NATURAL

The Heirloom Collection



87% WOOL, 13% COTTON, HAND KNOTTED,
MADE IN INDIA

Bring a touch of antiqued beauty into your home with our aptly names Heirloom Collection. Hand-knotted in India by master artisans, these 100% wool designs evoke an old world feel with a distressed texture.

61cm x 91cm

84cm x 244cm

84cm x 305cm

84cm x 427cm

183cm x 274cm

244 cm x 335cm

274cm x 366cm

305cm x 427cm

366cm x 457cm

396cm x 549cm



HQ 06 BONE CHARCOAL



HQ 03 FOG

The Holloway Collection



41% WOOL, 29% COTTON, 17% POLYESTER,
8% NYLON, 5% OTHER, HAND WOVEN IN INDIA

Masterfully hand-woven, the Holloway Collection for Magnolia Home by Joanna Gaines brings warm neutrals to life with quality craftsmanship. Full of textural detail and finished with a generous fringe, Holloway features a blend of wool, cotton, polyester, and nylon. Crafted by Loloi.

61cm x 91cm

84cm x 244cm

84cm x 305cm

84cm x 427cm

183cm x 274cm

244 cm x 335cm

274cm x 366cm

305cm x 427cm

366cm x 457cm

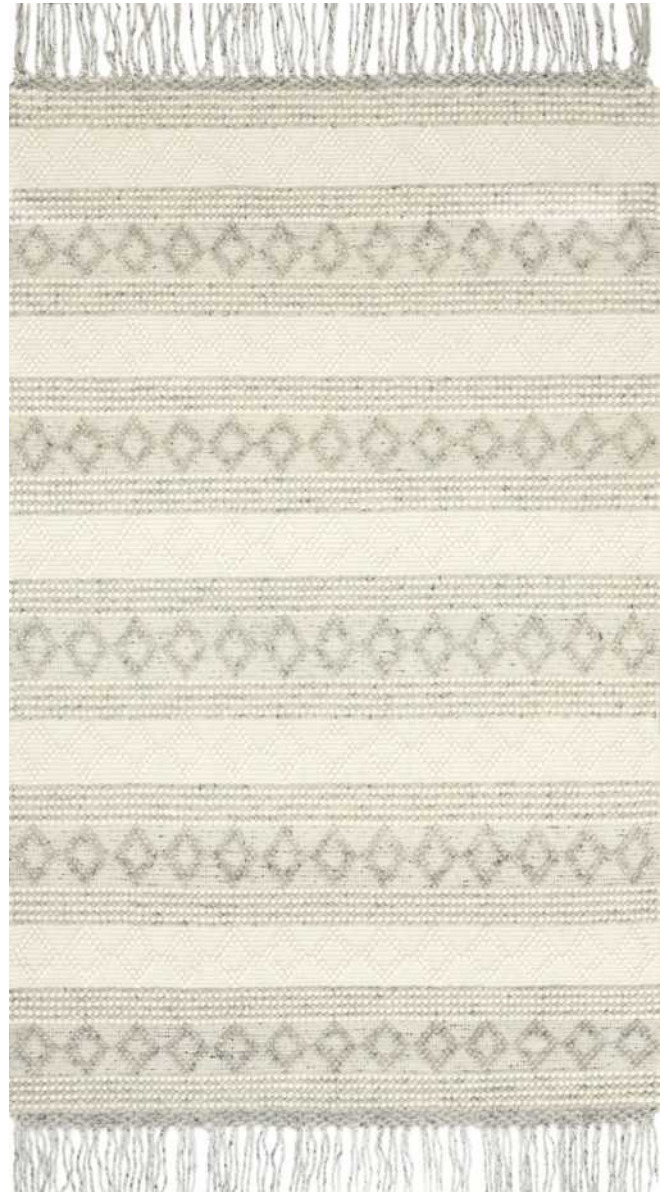
396cm x 549cm



YH-02 MH IVORY



YH-04 MH BLACK IVORY



YH-01 GREY IVORY

The Hygge Collection



70% VISCOSE, 30% WOOL,
HAND KNOTTED IN INDIA

Inspired by Scandinavian textile motifs, the Hygge Collection combines a soft shaggy texture with an enduring neutral palette. Each piece is hand loomed in India of wool and other fiber, ensuring long-wearing durability in even the busiest of rooms.

61cm x 91cm

122cm x 183cm

168cm x 259cm

236cm x 297cm

259cm x 350cm

289cm x 411cm

YG 04 OATMEAL SAND



YG 04 OATMEAL SAND



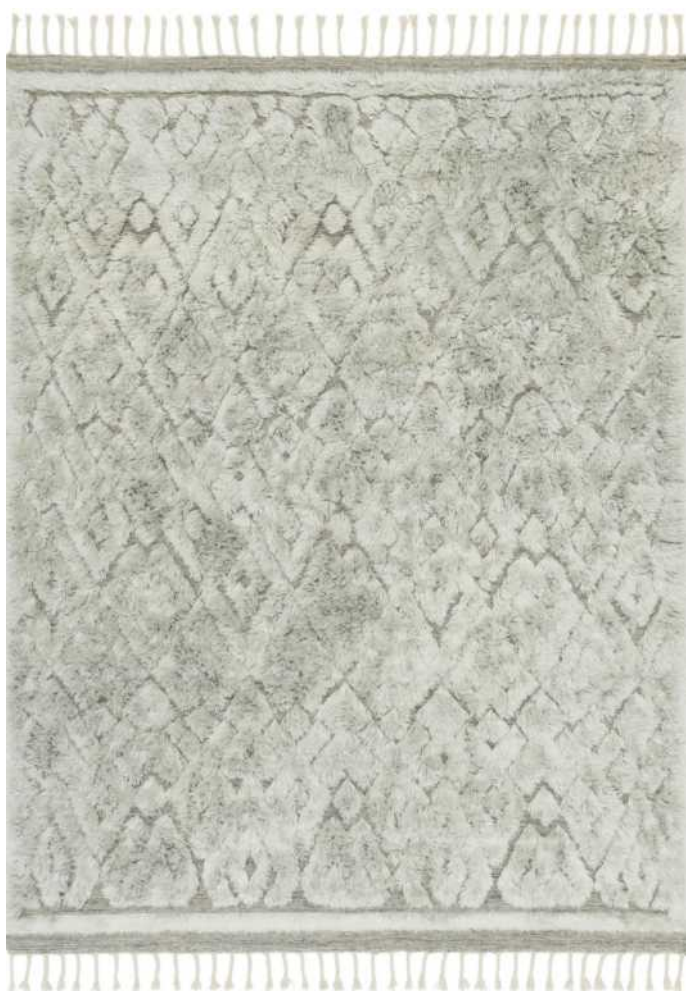
YG 03 OATMEAL/IVORY

The Hygge Collection



YG 03 OATMEAL/IVORY

YG 02 SMOKE/TAUPE



YG 01 GREY/MIST



YG 02 SMOKE/TAUPE

The Idris Collection

Discontinued



70% VISCOSE, 30% WOOL,
HAND KNOTTED IN INDIA

Both timeless and modern, the Idris Collection is meticulously hand-knotted in India of viscose and wool. The tonal series features an elevated texture, accentuating the pattern in every piece.

122cm x 183cm



ID 03 INK

The Idris Collection

The In Out Indoor/Outdoor Collection - Discontinued

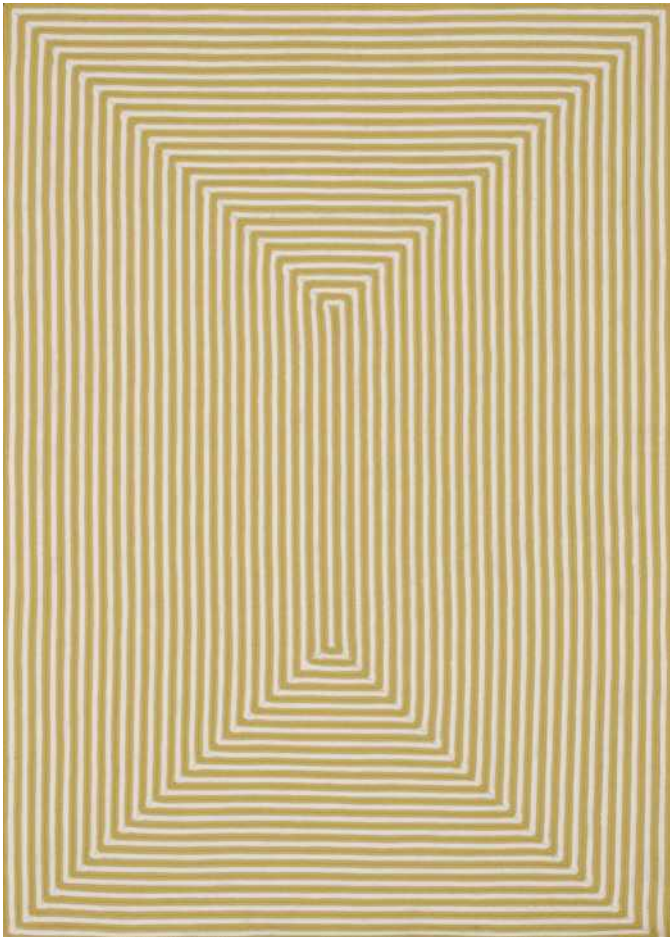


IO 01 BEIGE

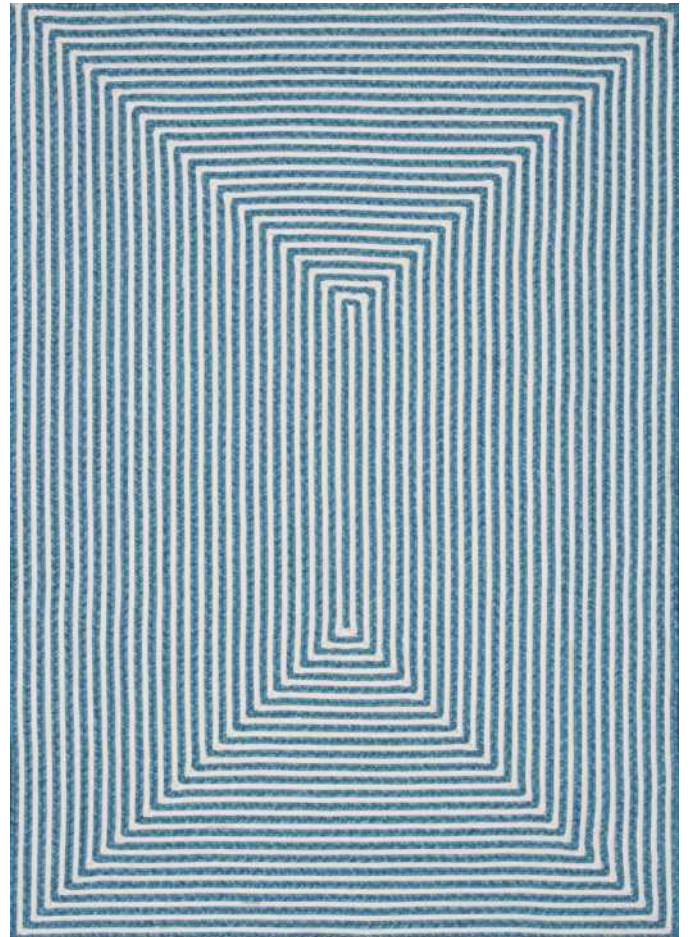
100% POLYPROPYLENE, BRAIDED,
MADE IN CHINA

Hand-braided in China of 100% polypropylene, the In/Out collection offers a fun and simplistic look. This easy-to-place collection works nicely in an interior space or outdoors and is available in an array of both neutral and vibrant colors.

168cm x 259cm



IO 01 YELLOW



IO 01 AQUA

The Layla Collection -



LAY 01 BLUE/BRICK

100% POLYESTER , POWER LOOMED
MADE IN CHINA

The Layla Collection is traditional and timeless, with a beautiful lived-in design that captures the spirit of an old-world rug. This traditional power-loomed rug is crafted in China of 100% polyester with a classic and sophisticated color palette and subtle patina.

68cm x 114cm

61cm x 152cm

76cm x 198cm

107cm x 168cm

76cm x 289cm

76cm x 366cm

152cm x 229cm

229cm x 289cm

274cm x 366cm

LAY 02 SPICE/MARINE



LAY 04 OCEAN/RUST



LAY 03 OLIVE CHARLOAL



LAY 03 OLIVE CHARLOAL



LAY 05 OCEAN/MULTI



LAY 13 ANTIQUE/MOSS



LAY-07 BLUE/TANGERINE



LAY-11 CINNAMON/SAGE



LAY-09 COBALT BLUE/



LAY-12 IVORY/BRICK



LAY-o8RED/NAVY



LAY-o6 TAUPE/STONE



LAY-17 PINK/LAGOON



LAY-15 MAGENTA/MULTI



LAY-10 MARINE/CLAY



LAY-14 MOCHA/BLUSH



LAY-16 NATURAL/SPICE

The Linnea Collection -



MULTI / TAUPE

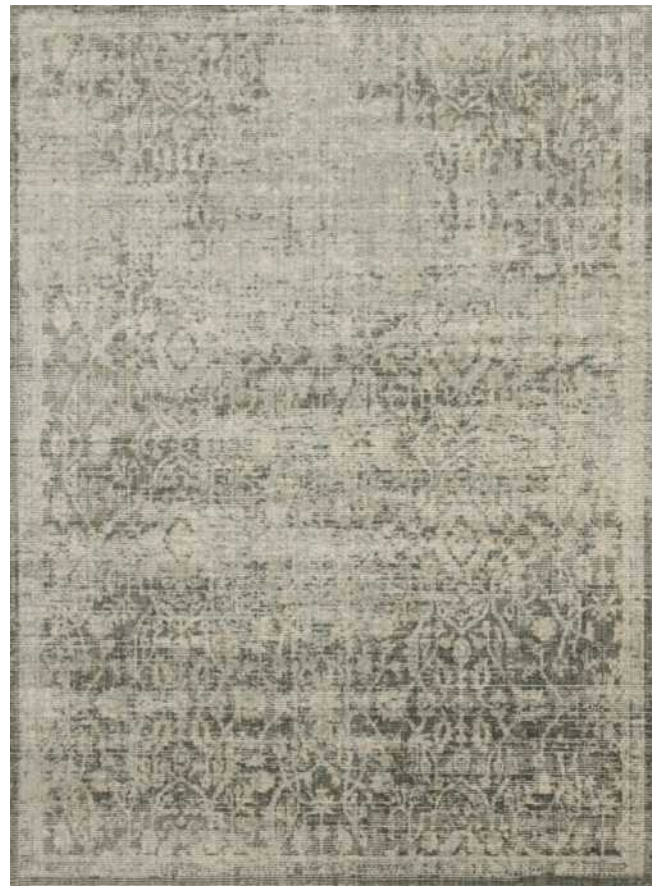
POWER LOOMED OF POLYESTER AND POLYPROPYLENE

Power-loomed of polyester & polypropylene, the Magnolia Home by Joanna Gaines Linnea Collection takes cues from traditional rugs yet updates the style through purposeful distressing and an elevated color palette that's tailored for today's homes. Crafted by Loloi.

		350 x 457cm	
79 x 91cm	160 x 160cm	239 x 239xm	79 x 396cm
109 x 109cm	109 x 170cm	239 x 330cm	160 x 234cm
79 x 234cm	79 x 330cm	289 x 396cm	201 x 279cm



NATURAL / SKY



MOSS / IVORY



TAUPE / MIST



MULTI / IVORY

The Loren Collection



100% POLYESTER, POWER LOOMED,
MADE IN TURKEY

Timeless and classic, the Loren Collection offers vintage hand-knotted looks at an affordable price. Created in Turkey using the most advanced rug-making technology, these printed designs provide a textured effect by portraying every single individual knot on a soft polyester base.

68cm x 114cm

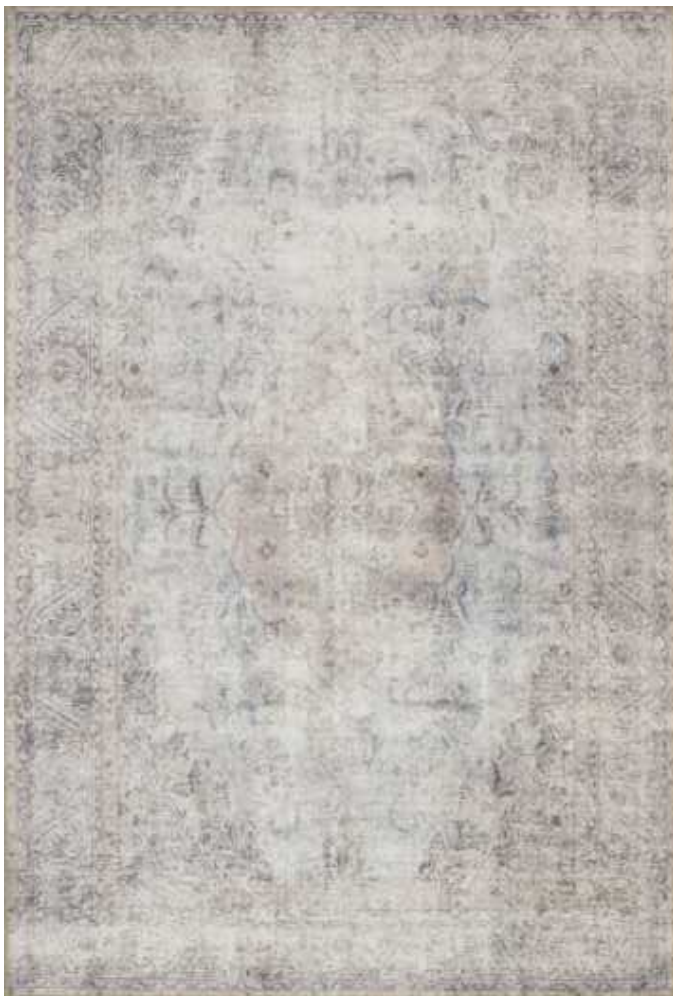
76cm x 229cm

107cm x 168cm

152cm x 229cm

229cm x 289cm

254cm x 350cm



LQ 04 SILVER SLATE



LQ 01 BLUE BRICK



LQ -02 PLUM MULTI



LQ -05 EGGPLANT CRIMSON



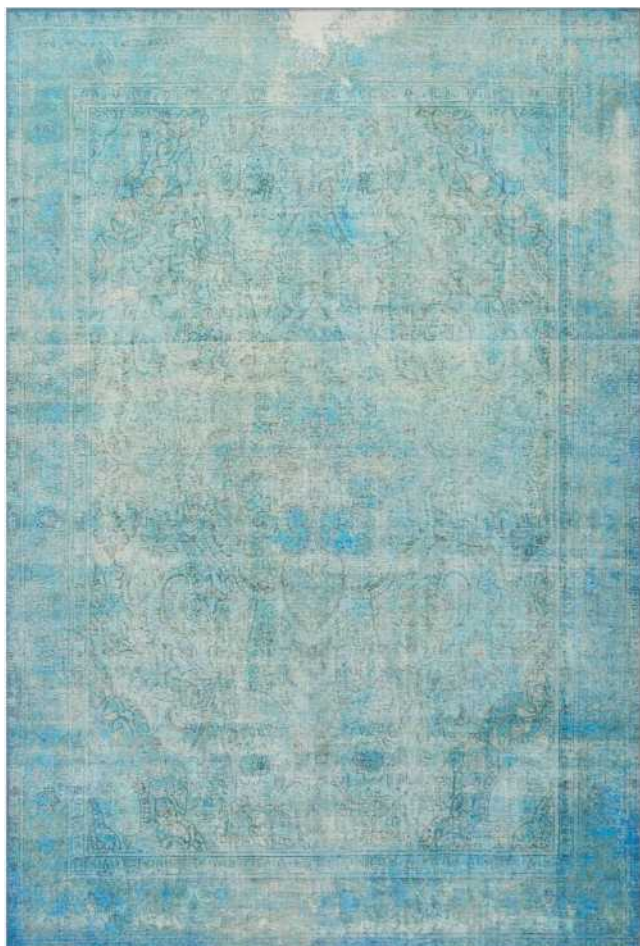
LQ -07 RED NAVY



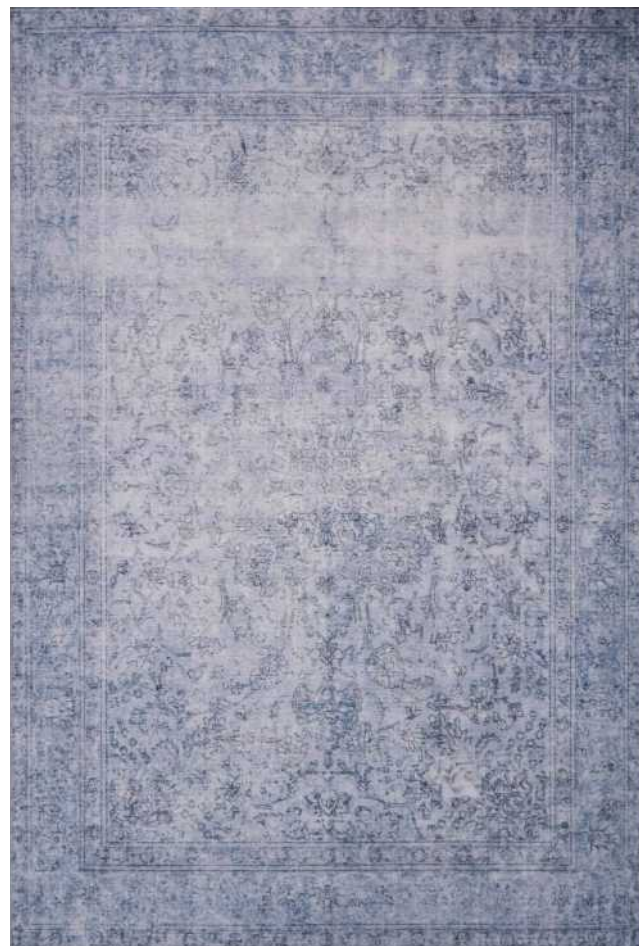
LQ -06 RED MULTI



LQ 03 SAND TAUPE



LQ -08 AQUA



LQ -09 SLATE



LQ -10 BLUE RED



LQ -11 SAND MULTI



LQ -15 TERRACOTTA SKY



LQ -13 BRICK MIDNIGHT



LQ -12 SAND

The Lotus Collection



100% POLYESTER, POWERLOOMED, MADE IN CHINA

Designed in collaboration with Joanna Gaines of Magnolia Home, the Lotus Collection combines the comfort of plush microfiber with high contrast, striking patterns. Power-loomed in China from 100% polyester yarns, this functional and stylish collection will be a statement piece in your home for years to come.

68cm x 114cm

76cm x 229cm

107cm x 168cm

152cm x 229cm

236cm x 297cm

282cm x 396cm

Functional &
Stylish
Statement
Piece



LB 01 MH BLACK SILVER



LB 01 MH ANT. IVORY MINK

The Lyle Collection



LK 04 MIST

100% WOOL PILE, HOOKED, MADE IN INDIA

Finely hooked of 100% wool, the carefully crafted Lyle Collection is acclaimed for its soft texture and muted colour range. Each piece showcases space-dyed wool, which lends a subtle gradation of hues throughout the traditional motifs.

76cm x 229cm

107 cm x 168cm

152 cm x 229Cm

236 cm x 297cm

282 cm x 396cm



LK 03 SLATE



LK 02 STONE



LK 03 BONE



LK 06 SAND

The Maddox Collection



100% POLYPROPYLENE, POWERLOOMED,
MADE IN TURKEY

Modern and sophisticated, the Maddox Collection offers cowhide patchwork looks at an affordable price. Power-loomed in China, these printed designs provide a textured effect by portraying every incredible detail of an animal hide on a soft polyester base.

68cm x 114cm

76cm x 229cm

107cm x 168cm

152cm x 229cm

229cm x 289cm



MAD 03 GREY IVORY



MAD 05 SILVER IVORY



MAD 06 CHARCOAL GREY



MAD 08 OCEAN GREY



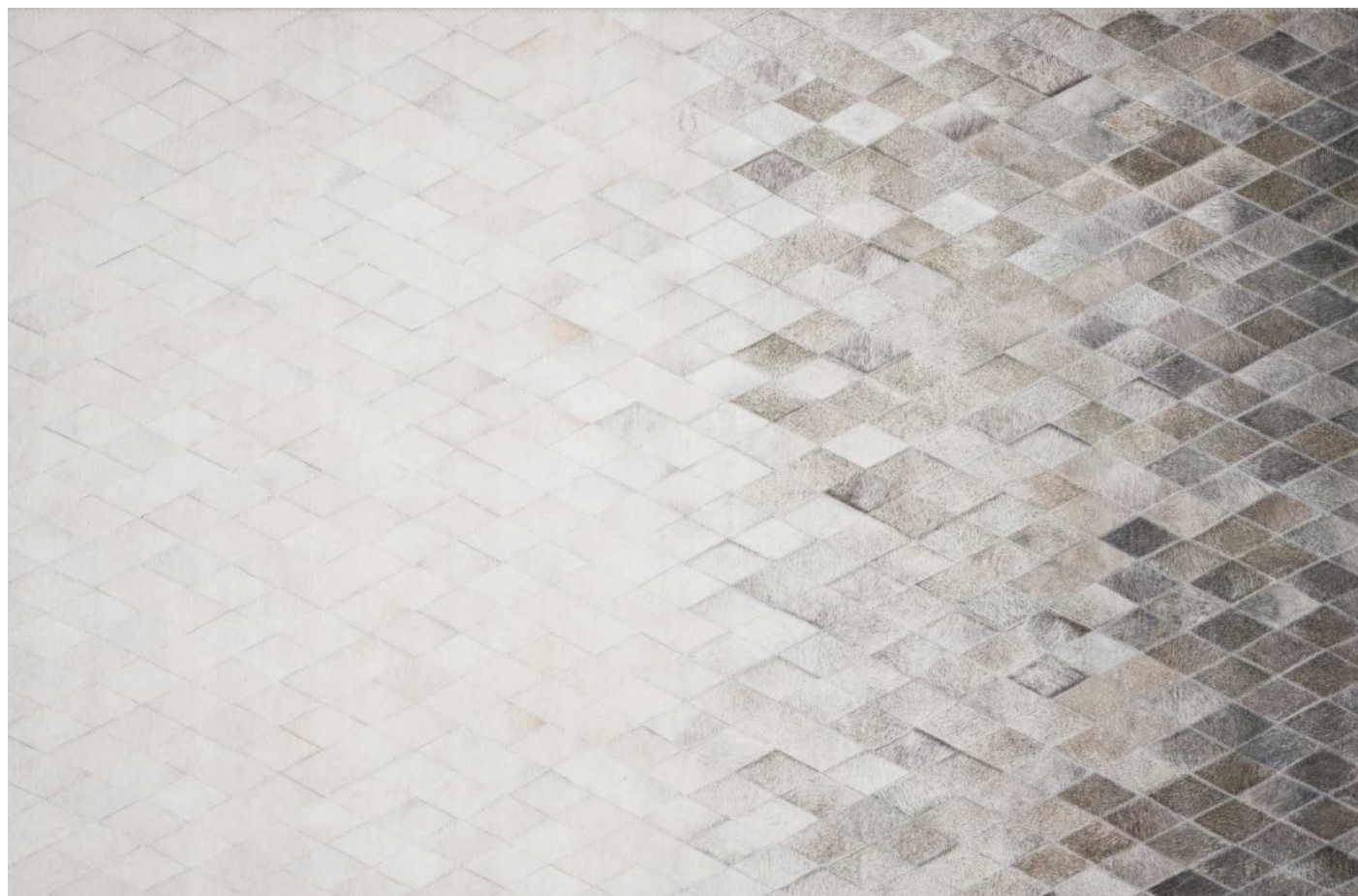
MAD 07 LT GREY IVORY



MAD 02 GREY MOCHA



MAD 01 IVORY GREY



MAD 04 SAND TAUPE

The Quincy Collection



QC 05 GRANITE

100% POLYPROPYLENE, POWERLOOMED,
MADE IN TURKEY

Plush and cozy underfoot, the Quincy Collection is an ideal combination of soft texture and contemporary pattern. The thick, shaggy pile is complemented by a tempered colour palette that works seamlessly in a variety of rooms. Power-loomed in Turkey of 100% polypropylene for long-lasting durability and colour fastness.

68cm x 122cm

68cm x 244cm

68cm x 366cm

99cm x 183cm

160cm x 229cm

239cm x 330cm

269cm x 366cm



QC 05 NAVY PEWTER

The Quincy Collection

The Quinn Collection



QN 01 INDIGO

100% JUTE, HAND KNOTTED IN INDIA

Hand-knotted of 100% jute by artisans in India, the Quinn Collection features a thick, textured pile with beautiful colour striations that are unique to every piece. The quiet elegance of Quinn also ensures seamless integration in any room.

61cm x 91cm

122cm x 183cm

168cm x 259cm

236cm x 297cm

259cm x 350cm

289cm x 411cm

366cm x 457cm



QN 01 IVORY



QN 01 CHARCOAL



QN 01 GREY

The Sandro Collection -

Discontinued



VISCOSE FROM BAMBOO, HANDKNITTED IN INDIA

Hand-knotted in India by the finest craftsman, the Sandro Collection offers an intriguing combination of two fibres - viscose from bamboo and linen - creating unexpected tactile moments that are smooth in some areas and organic in others.

168cm x 259cm

259cm x 350cm

236cm x 297cm



SK -02 STONE



SK 03 SILVER

The Sienne Collection



65% VISCOSE | 35% ACRYLIC, POWER LOOMED,
MADE IN TURKEY

Not too traditional. Not too contemporary. Power-loomed in Turkey of viscose and acrylic, the Sienne Collection is the ultimate versatile rug, touting a weighty pile that feels soft underfoot and offers a bit of sheen. Each tonal, subtly distressed design is accentuated by a refined colour palette that rivals the finest hand-knotted rugs.

109cm x 170cm

79cm x 244cm

79cm x 305cm

79cm x 366cm

160cm x 234cm

201cm x 279cm

239cm x 330cm

279cm x 366cm

371cm x 457cm



SIE 03 IVORY SAND



SIE 02 IVORY OCEAN



SIE 01 IVORY PEBBLE



SIE 05 IVORY AZURE



SIE 04 IVORY GOLD



SIE 07 IVORY GRANITE



SIE 01 DOVE OCEAN



SIE 06 GREY BLUE



SIE 08 SAND OCEAN

The Tatum Collection



100% WOOL, HOOKED, MADE IN INDIA

Drawing inspiration from global textiles, the Tatum Collection offers a unique textural look for any room. Each Tatum rug is hooked by master artisans in India for a soft dissolved look in each of the patterns.

76cm x 229cm

107cm x 168cm

152cm x 229cm

236cm x 297cm

282cm x 396cm



TW 02 STONE BLUE



TW 01 SLATE SILVER



TW -05 PEWTER STONE



TW -05 NATURAL SKY

The Theory Collection



THY 08 CHARCOAL GREY

100% POLYPROPYLENE/POLYESTER PILE,
POWER LOOMED, MADE IN TURKEY

Power-Loomed of polypropylene and polyester, the Theory Collection offers transitional designs for a seamless yet striking addition to any room. Designed with today's home in mind, Theory's construction is made for high-traffic areas with the comfort of a soft, plush pile.

76cm x 122cm

79cm x 234cm

109cm x 170cm

79cm x 330cm

79cm x 396cm

160cm x 234cm

239cm x 330cm

289cm x 396cm



THY 04 TAUPE GREY



THY 06 MOCHA NATURAL



THY 07 BEIGE TAUPE



THY 02 IVORY BLUE



THY 03 NATURAL GREY



THY 01 MIST BEIGE



THY 05 GREY SAND

The Venice Beach Collection -

Discontinued



INDOOR/OUTDOOR—100% POLYPROPYLENE,
MADE IN CHINA

The Venice Beach Collection brightens up your home - inside and out - with a series of appealing, modern designs from China. Hooked of 100% polypropylene, the rugs are UV and mildew resistant.

68cm x 114cm

107cm x 168cm

152cm x 229cm

239cm Round

229cm x 289cm



VB 23 IVORY GREEN



VB 12 GREEN TRELLIS



VB 18 BLUE GREEN

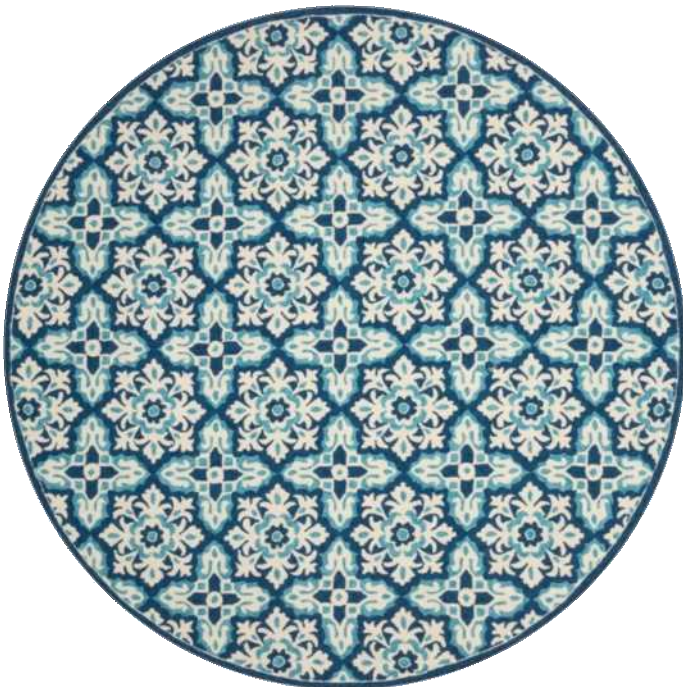


VB 26 BLUE IVORY

The Venice Beach Collection

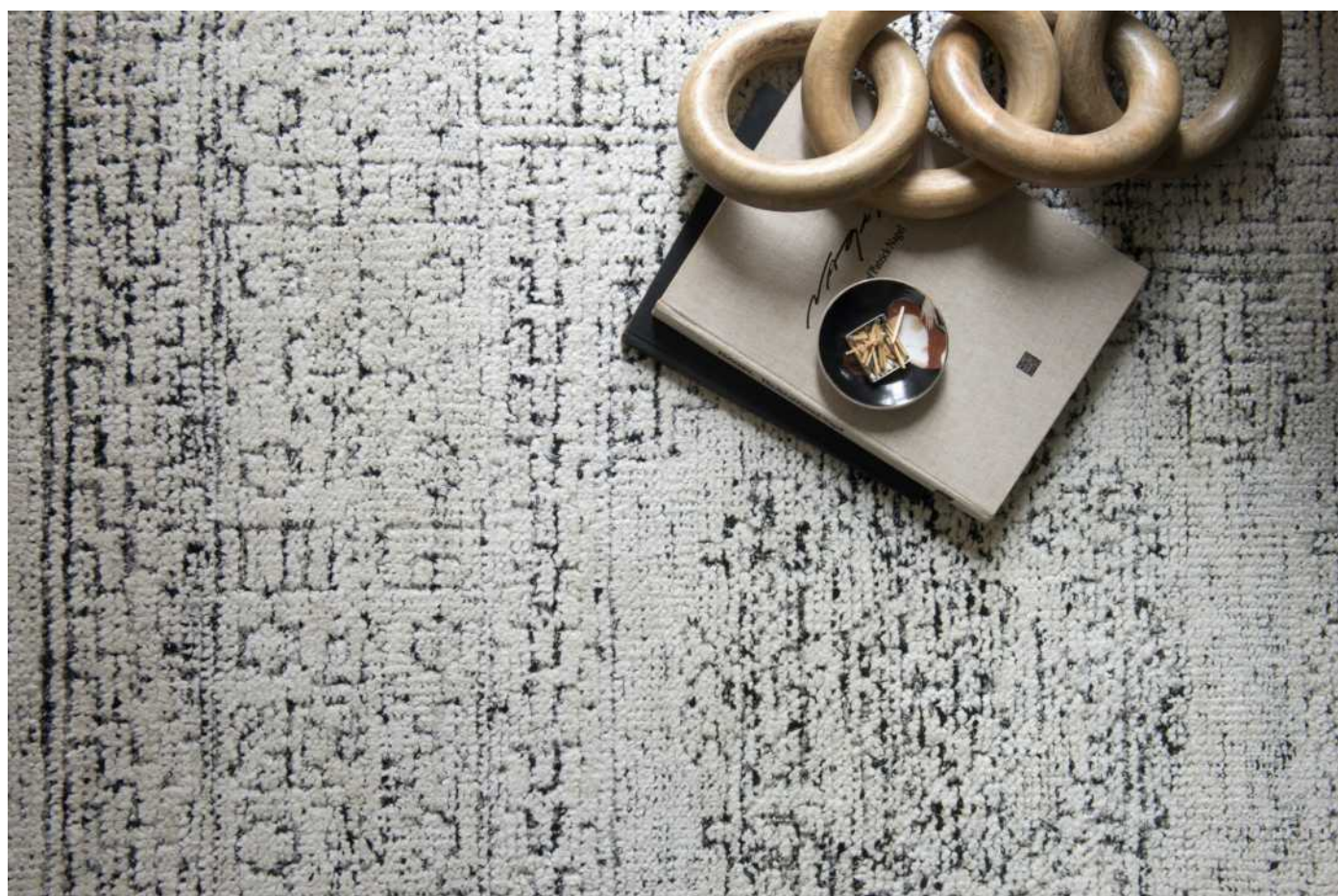


VB 28 IVORY GREY



VB 28 IVORY BLUE

The Vestige Collection



VQ 01 WHITE BLACK

100% VISCOSE, HAND KNOTTED IN INDIA

Hand-knotted in India of 100% viscose, the Vestige Collection recalls ancient khotan rugs in an updated colour palette. Soft underfoot, the silken yarns temper the graphic motifs to create a versatile foundation.

61cm x 91cm

84cm x 244cm

84cm x 366cm

84cm x 488cm

122cm x 487cm

183cm x 274cm

244cm x 305cm

274cm x 366cm

305cm x 427cm

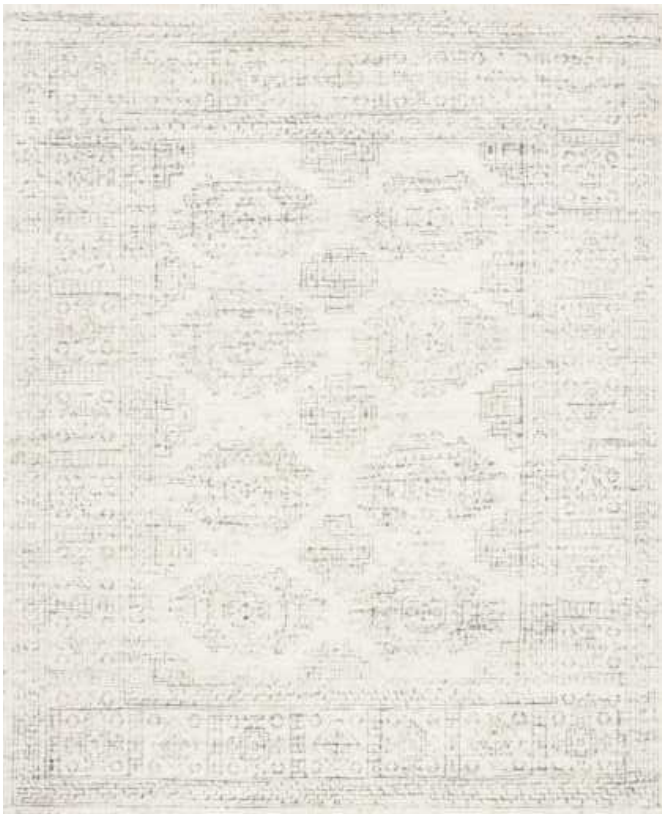
366cm x 457cm



The Vestige Collection



VQ 01 WHITE NATURAL



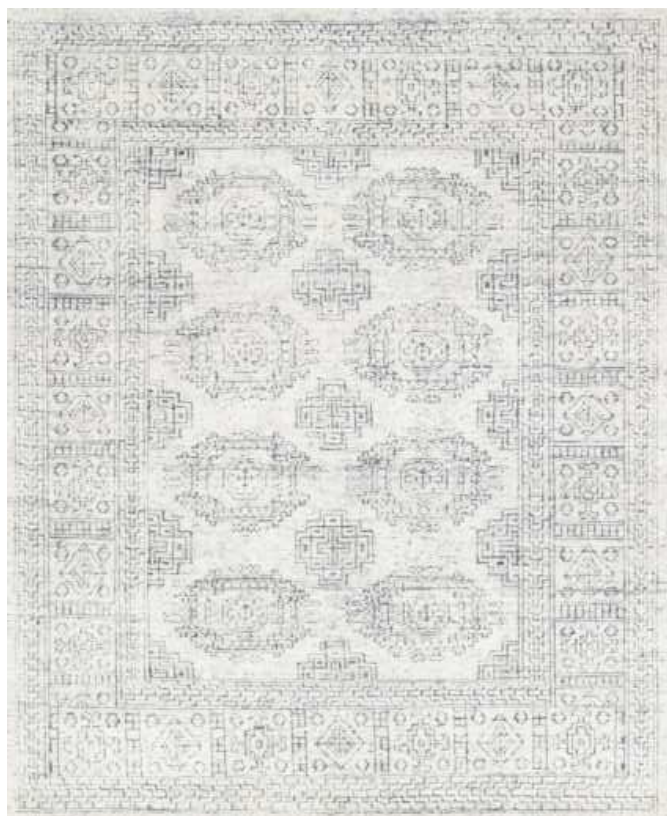
VQ 01 WHITE STONE



VQ 01 WHITE BLACK



VQ 01 WHITE PERSIMMON



VQ 01 WHITE INDIGO



VQ 01 WHITE BERRY

The Wild Bloom Collection - Discontinued



100% WOOL, HOOKED, MADE IN INDIA

Created in collaboration with artist and painter Bari J. the Wild Bloom Collection captures the essence of a traditional floral painting whilst providing the softness and comfort of the rug. Hooked of 100% wool by skilled artisans in India, this collection flourishes with colour, making it the centrepiece of any room.

107cm x 168cm

152cm x 229cm

236cm x 297cm

239cm Round

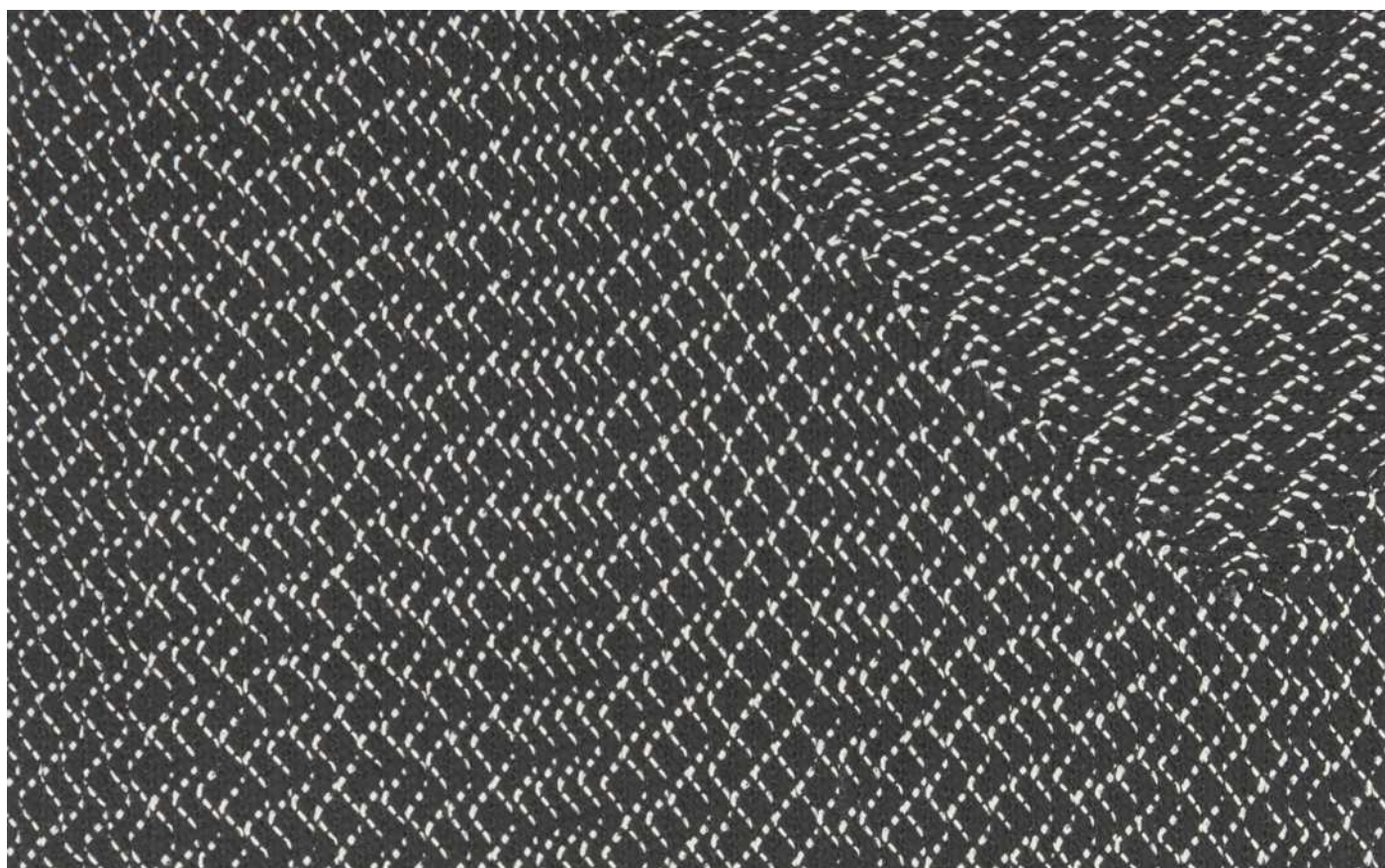


WV 01 IVORY MULTI

The Wild Bloom Collection

The Wylie Collection -

Discontinued

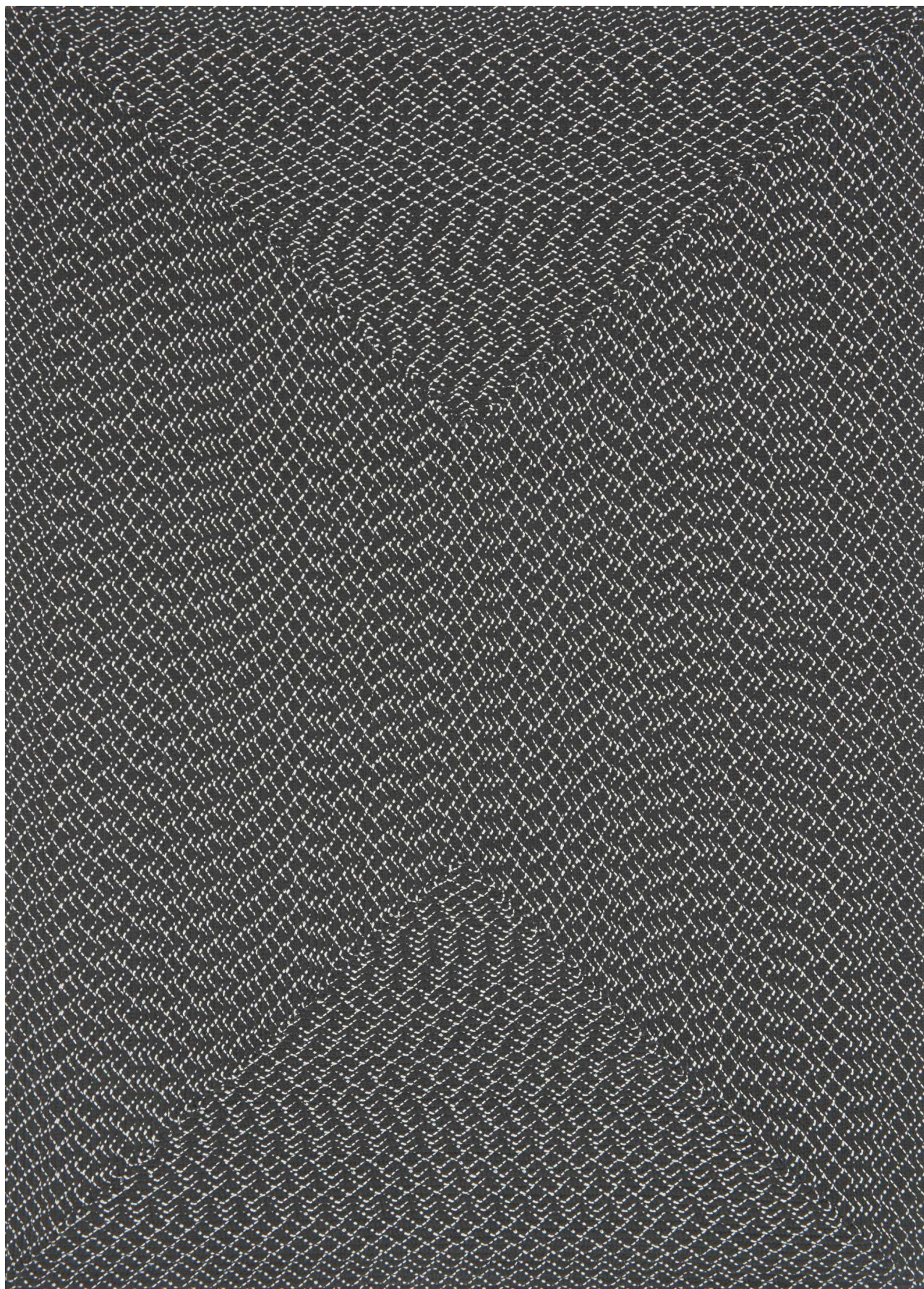


100% POLYPROPYLENE, BRAIDED, MADE IN INDIA

Hand-woven in India, the Wylie collection elevates the traditional braided rug with a pop of color and a contrasting stitch made from 100% polypropylene. Suitable for both indoor and outdoor use, the option of various neutrals or bold hues make it versatile for a range of decorating styles.

152cm x 229cm

236cm x 297cm



WB 01 CHARCOAL

The Zharah Collection



100% WOOL, HOOKED, MADE IN INDIA

Hooked by skilled artisans in India of 100% wool, the Zharah Collection boasts bold colours with impossible-to-miss patterns for a decidedly statement-making series of rugs.

76cm x 229cm

107cm x 168cm

152cm x 229cm

236cm x 297cm

282cm x 396cm



ZR 08 SANTA FE SPICE



ZR 07 FIESTA

CONSTRUCTION TECHNIQUES

HAND-KNOTTED - The Term “Oriental Rug” typically refers to a traditional design, hand-knotted area rug. Hand-knotted rugs are produced on a loom with base threads running vertically (warp) and horizontally (weft). At each point where the threads cross each other, coloured yarn is knotted by hand to form a design. The ends of the warp threads make the fringe on a fine hand knotted rug and the pattern of the rug is seen clearly on the back of the rug as there is no glue or backing applied.

Higher quality rugs usually have more knots per square inch and more intricate designs than lower quality styles. The density of the knots, fibre content, and complexity of the pattern are factors in both the quality and price for a hand-knotted rug.

TUFTED or HAND-TUFTED - This method differs slightly from other weaving techniques as the pile is incorporated by hand with a pistol-shaped device. The pattern design is laid out on cotton fabric, which is then stretched over a frame. The tufting gun is used to punch the yarn through the fabric and is fastened to a latex base. The yarn is then cut and shaved to ensure equal height. In the case of rugs with different height volumes, the surfaces are cut by hand with special angled scissors. This technique allows the skilled artisans to create curved patterns and pile of different heights and densities.

HAND-LOOMED - A precise manual weaving technique, involving vertical or horizontal looms, carried out by highly skilled artisans. The basic concept of weaving is to intersect the longitudinal threads, (the warp), with the transverse threads, (the weft). The yarn is stretched and fastened to the loom to create a taut warp. Working from bottom to top, the artisans weave the weft, creating the different patterns and textures. To create the pile, the fibre is wrapped around a special rod during the weaving process and then cut to ensure equal height. This technique permits a wide range of finishes, from simple and delicate short-strand pile, shag rugs to more elaborate loop pile involving various fibres.

POWER-LOOMED (machine-made) - Power loomed rugs offer beautiful rugs at an affordable price. These rugs are loomed either of synthetic fibres such as nylon and polypropylene, or of varying grades and qualities of wool.

HOOKED or HAND-HOOKED - Hooked rugs are made by pulling loops of yarn or fabric through a stiff woven base such as burlap, linen or rug warp which has been stretched over a frame. The design is printed on the base fabric, and the loops of yarn are pushed through the fabric (similar to the process for hand-tufting). The three most common types of hooked rugs are: standard hook - 1/2 inch loops; petit-pointe hook - 1/4 inch loops; and micro-hook - 1/8 inch loops. While a larger looped pile creates a plush heavily textured rug, a smaller loop will allow for greater detail and pattern definition.

BRAIDED or FLAT-WEAVE - Braided and flat woven rugs generally do not have a base material, and the pile itself (material or fibre used to make the rug) is braided or woven on a loom to create the structure of the rug. Braided rugs may be made of braided yarn or fabric. Flat-weave rugs maybe made of wool or other natural fibre such as sisal, jute , hemp or cotton.

HAND-WOVEN - The hand weaving technique is renown for its lack of pile. Requiring expert knowledge, skilled artisans are necessary for this traditional method of weaving that produces flat rugs with highly detailed patterns.

TYPES OF FIBRE

Picking the “right” fibre is contextual. You have to consider things like clean-ability, durability, softness, shedding, colour retention, and more. In fact, sometimes synthetic fibres like polypropylene or polyester are better choices than natural fibres because they’re stain-resistant, fade-resistant, and soft.

SYNTHETIC FIBRES

ACRYLIC

Moderately priced. Durable, although not as strong as other synthetics. Most commonly blended with other fibres like polyester (this is called a poly-acrylic blend).

POLYPROPYLENE

Very affordable. Easy to maintain and highly durable. Bold, fade-resistant colour. Commonly used in indoor/outdoor rugs for its UV, mildew and stain-resistant qualities.

VISCOSE

Synthetic, shiny fibre - sometimes called ‘art silk’. Often used as a more affordable substitute for silk. Some rugs are made of 100% viscose, but it’s more commonly used as an accent fibre.

POLYESTER

Very affordable. Wears well and feels very soft, especially when used for rugs with a thick pile. Moisture, stain and abrasion-resistant. Retains colour well overtime and is easy to clean.

NATURAL FIBRES

COTTON

Natural and soft. Sometimes used as thread for the base of a rug. Easy to clean and maintain.

JUTE

A naturally shiny vegetable. Relatively affordable and second only to cotton as the most produced natural fibre for rugs.

SISAL

A natural fibre that stems from the agave plant. Attracts minimal dust to rug and is static free. Highly sustainable.

WOOL

The most commonly used natural fibre in rug production. Wool usually refers to fibres from sheep. Fibre diameter is the single most important characteristic, determining price and quality.



Distributed By

LE MONDE HOME

[www.le monde.co.nz](http://www.lemonde.co.nz)